

# Brass gland, MDW...L type

## FEATURES & BENEFITS

✓ long-thread (PG) brass glands for thick-walled enclosures

✓ high impact strength

✓ for indoor and outdoor use

## LOGISTIC DATA

Quantity in package [pcs] 10

## MECHANICAL DATA

**Material** body: nickel-plated brass; seal: CR neoprene

**Assembly temperature [°C]** from -5

**Operating temperature [°C]** -20 ÷ +80

## DIMENSIONS

**E** 15

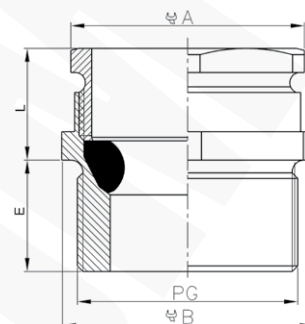
## CERTIFICATES & STANDARDS

**IP degree of protection** IP54 (with sealing washer)

**Standards** EN 62444; type A

## NOTE!

MDN Nuts and UUPE seals have to be ordered separately.



Type	Index Ergom	L	For spanner A	For spanner B	PG thread	Cable external diameter [mm]
MDW 11L (10 PCS)	E03DK-03020100203	12,5	19	20	PG11	7,5+10,5
MDW 13L (10 PCS)	E03DK-03020100303	12,0	20	22	PG13,5	10,5+13,5

