

# Brass gland, MDW...ML type

## FEATURES & BENEFITS

- brass glands with long M thread - for thick-wall enclosures
- high impact strength
- for indoor and outdoor use

## MECHANICAL DATA

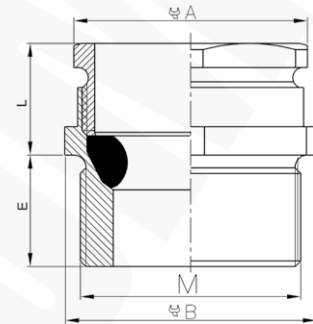
<b>Material</b>	body: nickel-plated brass; seal: CR neoprene
<b>Assembly temperature [°C]</b>	from -5
<b>Operating temperature [°C]</b>	-20 ÷ +80

## CERTIFICATES & STANDARDS

<b>IP degree of protection</b>	IP54 (with sealing washer)
<b>Standards</b>	EN 62444; type A

## NOTE!

MDN Nuts and UUPE seals have to be ordered separately.



Type	Index Ergom	E	L	For spanner A	For spanner B	M thread	Cable external diameter [mm]	Quantity in package [pcs]
<b>MDW 16ML (10 PCS)</b>	E03DK-03020200201	10	13	16	18	M16x1,5	6,5+9,5	10
<b>MDW 20ML (10 PCS)</b>	E03DK-03020200301	12	14	20	22	M20x1,5	8,5+13,0	10
<b>MDW 25ML (10 PCS)</b>	E03DK-03020200401	12	16	25	27	M25x1,5	12,0+17,0	10
<b>MDW 63ML</b>	E03DK-03020200801	15	32	65	70	M63x1,5	33,0+46,0	1

