

Aluminium longitudinally sealed tubular cable lugs, KRAC type

FEATURES & BENEFITS

- cable lug Al, longitudinally sealed, as per DIN, with galvanic tin plating
- description of cable cross-section, cable lug size and crimping die number on crimped part surface
- for voltage below 1 kV acc. to EN IEC 61238-1-1:2019
for the voltage range 1-36 kV acc. to EN IEC 61238-1-3:2019

MECHANICAL DATA

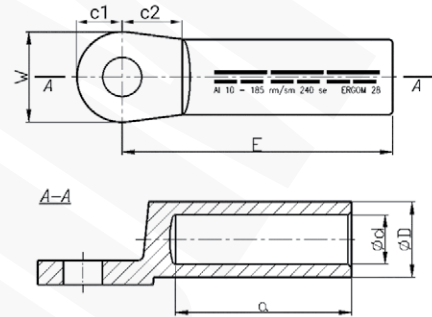
Material	Al
Surface	tin-plated

CERTIFICATES & STANDARDS

Standards	EN IEC 61238-1-1:2019 EN IEC 61238-1-3:2019 - mechanical strength Class 1 - Short-circuit resistance Class A for range of rated cross-section 16 - 300 mm ²
Design	DIN 46329

NOTE!

- cable lugs are filled with special contact grease, packed in a separate foil bag;
- sector-shaped conductors must be rounded with special dies.



Type	Index Ergom	Cross-section, re/se [mm ²]	Cross-section, rm/sm [mm ²]	d	D	a min	c1	c2	E	W	Screw hole	DIN	Socket code no.	Lz/s	Lz/w	Quantity in package [pcs]	Weight [kg]
KRAC 16/8 (100 PCS)	E12KA-01010300100	25	16	5,4	12,0	30	12,5	15,5	50	25	M8	-	12	2	4	100	1,66
KRAC 16/8 (10 PCS)	E12KA-01010300102										10	0,17					
KRAC 16/10 (100 PCS)	E12KA-01010300200										M10	-				100	1,62
KRAC 16/10 (10 PCS)	E12KA-01010300202										10	0,17					
KRAC 16/12 (100 PCS)	E12KA-01010300300										M12	-				100	1,54
KRAC 16/12 (10 PCS)	E12KA-01010300302										10	0,16					
KRAC 25/8 (100 PCS)	E12KA-01010300400	35	25	6,8	12,0	30	12,5	15,5	50	25	M8	-	12	2	4	100	1,54
KRAC 25/8 (10 PCS)	E12KA-01010300402										10	0,16					
KRAC 25/10 (100 PCS)	E12KA-01010300500										M10	√				100	1,53
KRAC 25/10 (10 PCS)	E12KA-01010300502										10	0,16					
KRAC 25/12 (100 PCS)	E12KA-01010300600										M12	-				100	1,45
KRAC 25/12 (10 PCS)	E12KA-01010300602										10	0,15					
KRAC 35/8 (100 PCS)	E12KA-01010300700	50	35	8,0	14,0	42	12,5	15,5	62	25	M8	-	14	3	5	100	2,3
KRAC 35/8 (10 PCS)	E12KA-01010300702										10	0,23					
KRAC 35/10 (100 PCS)	E12KA-01010300800										M10	√				100	2,3
KRAC 35/10 (10 PCS)	E12KA-01010300802										10	0,23					
KRAC 35/12 (100 PCS)	E12KA-01010300900										M12	-				100	2,1
KRAC 35/12 (10 PCS)	E12KA-01010300902										10	0,21					
KRAC 35/14 (100 PCS)	E12KA-01010301000	M14	-	100	1,82												
KRAC 35/14 (10 PCS)	E12KA-01010301002	10	0,19														

Type	Index Ergom	Cross-section, re/se [mm²]	Cross-section, rm/sm [mm²]	d	D	a min	c1	c2	E	W	Screw hole	DIN	Socket code no.	Lz/s	Lz/w	Quantity in package [pcs]	Weight [kg]
KRAC 50/8 (100 PCS)	E12KA-01010301100	70	50	9,8	16,0	42	12,5	15,5	62	25	M8	√	16	3	5	100	2,8
KRAC 50/8 (10 PCS)	E12KA-01010301102										10					0,28	
KRAC 50/10 (100 PCS)	E12KA-01010301200										100					2,8	
KRAC 50/10 (10 PCS)	E12KA-01010301202										10					0,28	
KRAC 50/12 (100 PCS)	E12KA-01010301300										100					2,8	
KRAC 50/12 (10 PCS)	E12KA-01010301302										10					0,28	
KRAC 50/14 (100 PCS)	E12KA-01010301400										100					2,4	
KRAC 50/14 (10 PCS)	E12KA-01010301402										10					0,24	
KRAC 70/8 (100 PCS)	E12KA-01010301500										95					70	11,2
KRAC 70/8 (10 PCS)	E12KA-01010301502	10	0,33														
KRAC 70/10 (100 PCS)	E12KA-01010301600	100	3,95														
KRAC 70/10 (10 PCS)	E12KA-01010301602	10	0,4														
KRAC 70/12 (100 PCS)	E12KA-01010301700	100	3,6														
KRAC 70/12 (10 PCS)	E12KA-01010301702	10	0,36														
KRAC 70/14 (100 PCS)	E12KA-01010301800	100	3,73														
KRAC 70/14 (10 PCS)	E12KA-01010301802	10	0,38														
KRAC 70/16 (100 PCS)	E12KA-01010301900	100	3,45														
KRAC 70/16 (10 PCS)	E12KA-01010301902	10	0,35														
KRAC 95/10 (50 PCS)	E12KA-01010302000	120	95	13,2	22,0	56	12,5	15,5	75	25	M10	√	22	3	6	50	2,87
KRAC 95/10 (10 PCS)	E12KA-01010302002										10					0,58	
KRAC 95/12 (50 PCS)	E12KA-01010302100										50					2,74	
KRAC 95/12 (10 PCS)	E12KA-01010302102										10					0,55	
KRAC 95/14 (50 PCS)	E12KA-01010302200										50					2,65	
KRAC 95/14 (10 PCS)	E12KA-01010302202										10					0,53	
KRAC 95/16 (50 PCS)	E12KA-01010302300										50					2,71	
KRAC 95/16 (10 PCS)	E12KA-01010302302										10					0,55	
KRAC 120/10 (50 PCS)	E12KA-01010302400										150					120	14,7
KRAC 120/10 (10 PCS)	E12KA-01010302402	10	0,65														
KRAC 120/12 (50 PCS)	E12KA-01010302500	50	3,2														
KRAC 120/12 (10 PCS)	E12KA-01010302502	10	0,64														
KRAC 120/14 (50 PCS)	E12KA-01010302600	50	3,2														
KRAC 120/14 (10 PCS)	E12KA-01010302602	10	0,64														
KRAC 120/16 (50 PCS)	E12KA-01010302700	50	3,3														
KRAC 120/16 (10 PCS)	E12KA-01010302702	10	0,66														
KRAC 150/10 (50 PCS)	E12KA-01010302800	185	150	16,3	25,0	60	15,0	20,0	90	30		M10	√	25	3		
KRAC 150/10 (10 PCS)	E12KA-01010302802										10	0,88					
KRAC 150/12 (50 PCS)	E12KA-01010302900										50	4,4					
KRAC 150/12 (10 PCS)	E12KA-01010302902										10	0,88					
KRAC 150/14 (50 PCS)	E12KA-01010303000										50	4,2					
KRAC 150/14 (10 PCS)	E12KA-01010303002										10	0,84					
KRAC 150/16 (50 PCS)	E12KA-01010303100										50	4,3					
KRAC 150/16 (10 PCS)	E12KA-01010303102										10	0,86					
KRAC 150/20 (50 PCS)	E12KA-01010303200										50	4,1					
KRAC 150/20 (10 PCS)	E12KA-01010303202	10	0,82														
KRAC 185/10 (50 PCS)	E12KA-01010303300	240	185	18,3	28,5	60	15,0	20,0	91	30	M10	√	28	3	6	50	5,25
KRAC 185/10 (10 PCS)	E12KA-01010303302										10					1,05	
KRAC 185/12 (50 PCS)	E12KA-01010303400										50					5,5	
KRAC 185/12 (10 PCS)	E12KA-01010303402										10					1,1	
KRAC 185/14 (50 PCS)	E12KA-01010303500										50					5,75	
KRAC 185/14 (10 PCS)	E12KA-01010303502										10					1,15	
KRAC 185/16 (50 PCS)	E12KA-01010303600										50					5,4	
KRAC 185/16 (10 PCS)	E12KA-01010303602										10					1,08	
KRAC 185/20 (50 PCS)	E12KA-01010303700										50					5,4	
KRAC 185/20 (10 PCS)	E12KA-01010303702	10	1,08														

Type	Index Ergom	Cross-section, re/se [mm ²]	Cross-section, rm/sm [mm ²]	d	D	a min	c1	c2	E	W	Screw hole	DIN	Socket code no.	Lz/s	Lz/w	Quantity in package [pcs]	Weight [kg]												
KRAC 240/10 (50 PCS)	E12KA-01010303800	300	240	21,0	32,0	70	19,0	24,0	103	38	M10	-	32	3	8	50	8,2												
KRAC 240/10 (10 PCS)	E12KA-01010303802										-	10				1,64													
KRAC 240/12 (50 PCS)	E12KA-01010303900										M12	√				50	8,4												
KRAC 240/12 (10 PCS)	E12KA-01010303902										-	10				1,68													
KRAC 240/14 (50 PCS)	E12KA-01010304000										M14	-				50	7,95												
KRAC 240/14 (10 PCS)	E12KA-01010304002										-	10				1,59													
KRAC 240/16 (50 PCS)	E12KA-01010304100										M16	√				50	8												
KRAC 240/16 (10 PCS)	E12KA-01010304102										-	10				1,6													
KRAC 240/20 (50 PCS)	E12KA-01010304200										M20	-				50	7,75												
KRAC 240/20 (10 PCS)	E12KA-01010304202										-	10				1,55													
KRAC 300/12 (25 PCS)	E12KA-01010304400										-	300				23,3	34,0	70	19,0	24,0	103	38	M12	√	34	3	-	25	3,61
KRAC 300/12 (10 PCS)	E12KA-01010304402																						-	10				1,45	
KRAC 300/14 (25 PCS)	E12KA-01010304500	M14	-	25	4,1																								
KRAC 300/14 (10 PCS)	E12KA-01010304502	-	10	1,64																									
KRAC 300/16 (25 PCS)	E12KA-01010304600	M16	-	25	4,3																								
KRAC 300/16 (10 PCS)	E12KA-01010304602	-	10	1,72																									
KRAC 300/20 (25 PCS)	E12KA-01010304700	M20	√	25	4,2																								
KRAC 300/20 (10 PCS)	E12KA-01010304702	-	10	1,68																									

Lz/s - Number of crimping - wide, Lz/w - Number of crimping - narrow