

# Insulated pin terminals, KII...PC type

## FEATURES & BENEFITS

- ☒ pin terminal Cu, as per DIN, with polycarbonate insulating sleeve, marked with cable cross-section
- ☒ to operate in wider temperature ranges than terminals with polyamide insulation
- ☒ insulating sleeve: enhances resistance to vibrations, mitigates short-circuit risk
- ☒ sleeve colours facilitate cross-section identification

## LOGISTIC DATA

Quantity in package [pcs] 100

## MECHANICAL DATA

Insulation polycarbonate

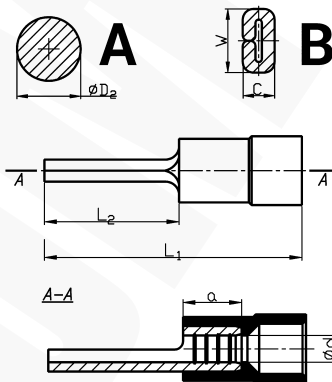
Material Cu

Surface tin-plated

Operating temperature [°C] -50 ÷ +120

## CERTIFICATES & STANDARDS

Design DIN 46231 – concerns only the tubular part



Type	Index Ergom	Cross-section [mm²]	Insulation colour	Design	DIN	d	L <sub>1</sub>	L <sub>2</sub>	a	D <sub>2</sub>	C	W	Weight [kg]
KII 1-10 PC (100 PCS)	E09KO-02040200200	0,75÷1,0	red	A	√	1,6	21,0	10,0	4,8	1,9	–	–	0,08
KII 1-12 PC (100 PCS)	E09KO-02040200300						23,0	12,0					
KII 1-16 PC (100 PCS)	E09KO-02040200400						27,0	16,0					
KII 2,5-10 PC (100 PCS)	E09KO-02040200500	1,5÷2,5	blue	A	√	2,3	21,0	10,0	4,8	1,9	–	–	0,09
KII 2,5-12 PC (100 PCS)	E09KO-02040200600						23,0	12,0					
KII 2,5-16 PC (100 PCS)	E09KO-02040200800						27,0	16,0					
KII 6-14 PC (100 PCS)	E09KO-02040200900	4÷6	yellow	A	√	3,6	27,0	14,0	6,0	2,7	–	–	0,17
KII 10-12 PC (100 PCS)	E09KO-02040201000	10	red	B	–	4,5	34,0	14,0	8,0	–	2,4	4,5	0,34