

Angle ring terminals, K450 type

FEATURES & BENEFITS

ring terminal, Cu, as per DIN, however the connection fin is bended at 45 degrees relative to the terminal part crimped on the wire

description of cable cross-section and terminal size on fin surface

LOGISTIC DATA

Quantity in package [pcs] 100

MECHANICAL DATA

Material Cu

Surface tin-plated

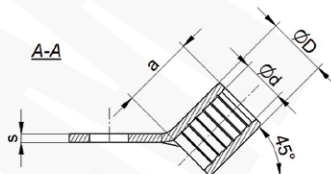
CERTIFICATES & STANDARDS

Design DIN 46234 - before fin bending

NOTE!

Use tools as for KO terminals.

Bending can be made at different angle.



Type	Index Ergom	Cross-section [mm ²]	Screw hole	d	D	s	a	W	Weight [kg]						
K450 1/2,5 (100 PCS)	E09KO-01040100700	0,75+1,0	M2,5	1,6	3,2	0,8	5	6	0,06						
K450 1/3 (100 PCS)	E09KO-01040100800		M3												
K450 1/3,5 (100 PCS)	E09KO-01040100900		M3,5												
K450 1/4 (100 PCS)	E09KO-01040101000		M4												
K450 1/5 (100 PCS)	E09KO-01040101100		M5												
K450 1/6 (100 PCS)	E09KO-01040101200		M6												
K450 1/8 (100 PCS)	E09KO-01040101300		M8												
K450 1/10 (100 PCS)	E09KO-01040101400		M10												
K450 2,5/3 (100 PCS)	E09KO-01040101500		M3							2,3	3,9	0,8	5	6	0,06
K450 2,5/3,5 (100 PCS)	E09KO-01040101600		M3,5												
K450 2,5/4 (100 PCS)	E09KO-01040101700	M4													
K450 2,5/5 (100 PCS)	E09KO-01040101800	M5													
K450 2,5/6 (100 PCS)	E09KO-01040101900	M6													
K450 2,5/8 (100 PCS)	E09KO-01040102000	M8													
K450 2,5/10 (100 PCS)	E09KO-01040102100	M10													
K450 6/3,5 (100 PCS)	E09KO-01040102400	M3,5	3,6	5,6	1,0	6	8	0,14							
K450 6/4 (100 PCS)	E09KO-01040102500	M4													
K450 6/5 (100 PCS)	E09KO-01040102600	M5													
K450 6/6 (100 PCS)	E09KO-01040102700	M6													
K450 6/8 (100 PCS)	E09KO-01040102800	M8													
K450 6/10 (100 PCS)	E09KO-01040102900	M10													
K450 10/4 (100 PCS)	E09KO-01040103100	M4							4,5	6,7	1,1	8	10	0,24	
K450 10/5 (100 PCS)	E09KO-01040103200	M5													
K450 10/6 (100 PCS)	E09KO-01040103300	M6													
K450 10/8 (100 PCS)	E09KO-01040103400	M8													
K450 10/10 (100 PCS)	E09KO-01040103500	M10													

Type	Index Ergom	Cross-section [mm ²]	Screw hole	d	D	s	a	W	Weight [kg]
K45O 16/5 (100 PCS)	E09KO-01040103700	16	M5	5,8	8,2	1,2	10	11	0,38
K45O 16/6 (100 PCS)	E09KO-01040103800		M6						0,36
K45O 16/8 (100 PCS)	E09KO-01040103900		M8						0,42
K45O 16/10 (100 PCS)	E09KO-01040104000		M10						0,5
K45O 25/5 (100 PCS)	E09KO-01040104200	25	M5	7,5	10,5	1,5	11	12	0,72
K45O 25/6 (100 PCS)	E09KO-01040104300		M6						0,7
K45O 25/8 (100 PCS)	E09KO-01040104400		M8						0,77
K45O 25/10 (100 PCS)	E09KO-01040104500		M10						0,8
K45O 25/12 (100 PCS)	E09KO-01040104650	M12	0,98						
K45O 35/6 (100 PCS)	E09KO-01040104800	35	M6	9,0	12,2	1,6	12	15	1
K45O 35/8 (100 PCS)	E09KO-01040104900		M8						0,97
K45O 35/10 (100 PCS)	E09KO-01040105000		M10						0,98
K45O 35/12 (100 PCS)	E09KO-01040105150		M12						1,2
K45O 50/6 (100 PCS)	E09KO-01040105400	50	M6	11,0	14,6	1,8	16	18	1,65
K45O 50/8 (100 PCS)	E09KO-01040105500		M8						1,75
K45O 50/10 (100 PCS)	E09KO-01040105600		M10						1,63
K45O 50/12 (100 PCS)	E09KO-01040105750		M12						1,85