

Angle ring terminals, K900 type

FEATURES & BENEFITS

ring terminal, Cu, as per DIN, however the connection fin is bended at 90 degrees relative to the terminal part crimped on the wire

description of cable cross-section and terminal size on fin surface

LOGISTIC DATA

Quantity in package [pcs] 100

MECHANICAL DATA

Material Cu

Surface tin-plated

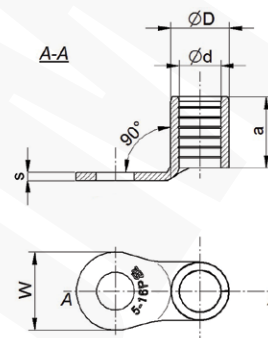
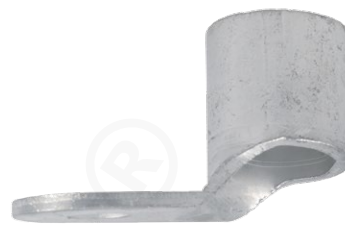
CERTIFICATES & STANDARDS

Design DIN 46234 - before fin bending

NOTE!

Use tools as for KO terminals.

Bending can be made at different angle.



Type	Index Ergom	Cross-section [mm ²]	Screw hole	d	D	s	a	W	Weight [kg]						
K900 1/2,5 (100 PCS)	E09KO-01060100700	0,75±1,0	M2,5	1,6	3,2	0,8	5	6	0,06						
K900 1/3 (100 PCS)	E09KO-01060100800		M3												
K900 1/3,5 (100 PCS)	E09KO-01060100900		M3,5												
K900 1/4 (100 PCS)	E09KO-01060101000		M4												
K900 1/5 (100 PCS)	E09KO-01060101100		M5												
K900 1/6 (100 PCS)	E09KO-01060101200		M6												
K900 1/8 (100 PCS)	E09KO-01060101300		M8												
K900 1/10 (100 PCS)	E09KO-01060101400		M10												
K900 2,5/3 (100 PCS)	E09KO-01060101500		M3							2,3	3,9	0,8	5	6	0,06
K900 2,5/3,5 (100 PCS)	E09KO-01060101600		M3,5												
K900 2,5/4 (100 PCS)	E09KO-01060101700	M4													
K900 2,5/5 (100 PCS)	E09KO-01060101800	M5													
K900 2,5/6 (100 PCS)	E09KO-01060101900	M6													
K900 2,5/8 (100 PCS)	E09KO-01060102000	M8													
K900 2,5/10 (100 PCS)	E09KO-01060102100	M10													
K900 6/3,5 (100 PCS)	E09KO-01060102400	M3,5	3,6	5,6	1,0	6	8	0,14							
K900 6/4 (100 PCS)	E09KO-01060102500	M4													
K900 6/5 (100 PCS)	E09KO-01060102600	M5													
K900 6/6 (100 PCS)	E09KO-01060102700	M6													
K900 6/8 (100 PCS)	E09KO-01060102800	M8													
K900 6/10 (100 PCS)	E09KO-01060102900	M10													
K900 10/4 (100 PCS)	E09KO-01060103100	M4							4,5	6,7	1,1	8	10	0,24	
K900 10/5 (100 PCS)	E09KO-01060103200	M5													
K900 10/6 (100 PCS)	E09KO-01060103300	M6													
K900 10/8 (100 PCS)	E09KO-01060103400	M8													
K900 10/10 (100 PCS)	E09KO-01060103500	M10													

Type	Index Ergom	Cross-section [mm ²]	Screw hole	d	D	s	a	W	Weight [kg]
K900 16/5 (100 PCS)	E09KO-01060103700	16	M5	5,8	8,2	1,2	10	11	0,38
K900 16/6 (100 PCS)	E09KO-01060103800		M6						0,36
K900 16/8 (100 PCS)	E09KO-01060103900		M8						0,42
K900 16/10 (100 PCS)	E09KO-01060104000		M10						0,5
K900 25/5 (100 PCS)	E09KO-01060104200	25	M5	7,5	10,5	1,5	11	12	0,72
K900 25/6 (100 PCS)	E09KO-01060104300		M6						0,7
K900 25/8 (100 PCS)	E09KO-01060104400		M8						0,77
K900 25/10 (100 PCS)	E09KO-01060104500		M10						0,8
K900 35/6 (100 PCS)	E09KO-01060104800	35	M6	9,0	12,2	1,6	12	15	1
K900 35/8 (100 PCS)	E09KO-01060104900		M8						0,97
K900 35/10 (100 PCS)	E09KO-01060105000		M10						0,98
K900 50/6 (100 PCS)	E09KO-01060105400	50	M6	11,0	14,6	1,8	16	18	1,65
K900 50/8 (100 PCS)	E09KO-01060105500		M8						1,75
K900 50/10 (100 PCS)	E09KO-01060105600		M10						1,63