

Insulated tubular ring terminals with inspection hole, KORol type

FEATURES & BENEFITS

- ring terminal, Cu, with inspection hole, standard, with galvanic tin plating and insulating sleeve
- description of cable cross-section and terminal size on fin surface
- insulating sleeve: enhances resistance to vibrations, mitigates short-circuit risk, facilitates cable installation
- sleeve colours facilitate cross-section identification

LOGISTIC DATA

Quantity in package [pcs] 100

MECHANICAL DATA

Insulation polyamide 6.6

Material Cu

Surface tin-plated

Operating temperature [°C] -30 ÷ 95

CERTIFICATES & STANDARDS

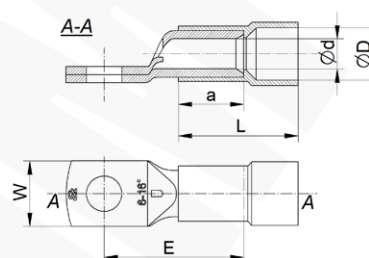
Design standard

NOTE!

Sector-shaped wires (sm) must be "round" formed.

Other insulation colours on request

UL certificate - for up-to-date information, visit www.ergom.com



Type	Index Ergom	Cross-section, rm/sm [mm ²]	d	D	a	E	L	W	Insulation colour	Screw hole	Weight [kg]
KORol 10/5 (100 PCS)	E11KM-01110000100	10	4,5	7,5	10	21,0	17,5	12	red	M5	0,55
KORol 10/6 (100 PCS)	E11KM-01110000200					21,5				M6	0,54
KORol 10/8 (100 PCS)	E11KM-01110000300					23,5				M8	0,62
KORol 10/10 (100 PCS)	E11KM-01110000400					25,5				M10	0,67
KORol 10/12 (100 PCS)	E11KM-01110000500					26,5				M12	0,66
KORol 16/5 (100 PCS)	E11KM-01110001100	16	5,5	9,6	13	25,0	22,0	12	blue	M5	0,94
KORol 16/6 (100 PCS)	E11KM-01110001200					25,5				M6	0,93
KORol 16/8 (100 PCS)	E11KM-01110001300					27,5				M8	1
KORol 16/10 (100 PCS)	E11KM-01110001400					29,5				M10	1,03
KORol 16/12 (100 PCS)	E11KM-01110001500					30,5				M12	1,13
KORol 25/5 (100 PCS)	E11KM-01110002100	25	7	12,0	15	28,0	25,0	14	yellow	M5	1,22
KORol 25/6 (100 PCS)	E11KM-01110002200					28,5				M6	1,26
KORol 25/8 (100 PCS)	E11KM-01110002300					30,5				M8	1,29
KORol 25/10 (100 PCS)	E11KM-01110002400					32,5				M10	1,34
KORol 25/12 (100 PCS)	E11KM-01110002500					33,5		M12			
KORol 25/14 (100 PCS)	E11KM-01110002600					35,5		M14			
KORol 35/6 (100 PCS)	E11KM-01110003100					31,5		M6		1,65	
KORol 35/8 (100 PCS)	E11KM-01110003200					33,5		M8		1,85	
KORol 35/10 (100 PCS)	E11KM-01110003300	35,5	M10	1,99							
KORol 35/12 (100 PCS)	E11KM-01110003400	36,5	M12	2,15							
KORol 35/14 (100 PCS)	E11KM-01110003500	38,5	M14	2,1							
KORol 35/16 (100 PCS)	E11KM-01110003600	39,5	M16	2,25							