

Tubular angle terminals, K90R type

FEATURES & BENEFITS

- ring terminal Cu, standard, with galvanic tin plating and 90 degrees angle terminal fixture
- description of cable cross-section and terminal size on fin surface
- for voltage below 1 kV acc. to EN IEC 61238-1-1:2019
for the voltage range 1-36 kV acc. to EN IEC 61238-1-3:2019

MECHANICAL DATA

Material	Cu
Surface	tin-plated

CERTIFICATES & STANDARDS

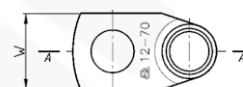
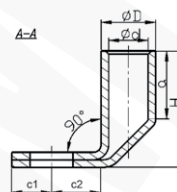
Standards	EN IEC 61238-1-1:2019 EN IEC 61238-1-3:2019 - mechanical strength Class 1 - short-circuit resistance Class A for range of rated cross-section 10 - 240 mm ²
UL certificate	E475284
Design	standard

NOTE!

Sector-shaped conductors (sm) must be rounded with special dies.

Other designs on request.

UL certificate - visit www.ergom.com



Type	Index Ergom	Cross-section, mm ² [mm ²]	d	D	a	c1	c2	W	H	Screw hole	UL	Socket code no.	Lz/s	Lz/w	Quantity in package [pcs]	Weight [kg]
K90R 6/5 (100 PCS)	E11KM-01040100020	6	4,0	6,0	10	7,0	10	9	13,0	M5	-	4	1	1	100	0,32
K90R 6/6 (100 PCS)	E11KM-01040100030					7,5				M6						0,34
K90R 6/8 (100 PCS)	E11KM-01040100050					9,0				M8						0,41
K90R 10/5 (100 PCS)	E11KM-01040100100	10	4,5	7,0	10	7,5	10,0	12,0	15,0	M5	-	7	1	1	100	0,65
K90R 10/5 (10 PCS)	E11KM-01040100102									10					0,07	
K90R 10/6 (100 PCS)	E11KM-01040100200									100					0,65	
K90R 10/6 (10 PCS)	E11KM-01040100202					10	0,07									
K90R 10/8 (100 PCS)	E11KM-01040100300					100	0,71									
K90R 10/8 (10 PCS)	E11KM-01040100302					10	0,08									
K90R 10/10 (100 PCS)	E11KM-01040100400					100	0,77									
K90R 10/10 (10 PCS)	E11KM-01040100402	10	0,08													
K90R 10/12 (100 PCS)	E11KM-01040100500	10	4,5	7,0	10	11,0	15,0	17,0	15,0	M10	-	7	1	1	100	0,77
K90R 10/12 (10 PCS)	E11KM-01040100502									10					0,08	
K90R 16/5 (10 PCS)	E11KM-01040100602									10					0,1	
K90R 16/5 (100 PCS)	E11KM-01040100600	16	5,5	8,5	13	7,0	10,0	12,0	20,0	M5	√	8	1	2	100	1
K90R 16/6 (100 PCS)	E11KM-01040100700									100					1,1	
K90R 16/6 (10 PCS)	E11KM-01040100702									10					0,11	
K90R 16/8 (100 PCS)	E11KM-01040100800	16	5,5	8,5	13	9,0	13,0	15,0	20,0	M8	√	8	1	2	100	1,15
K90R 16/8 (10 PCS)	E11KM-01040100802									10					0,12	
K90R 16/10 (100 PCS)	E11KM-01040100900									100					1,2	
K90R 16/10 (10 PCS)	E11KM-01040100902					10	0,12									
K90R 16/12 (100 PCS)	E11KM-01040101000					100	1,2									
K90R 16/12 (10 PCS)	E11KM-01040101002	10	0,12													

Type	Index Ergom	Cross-section, mm/sm [mm ²]	d	D	a	c1	c2	W	H	Screw hole	UL	Socket code no.	Lz/s	Lz/w	Quantity in package [pcs]	Weight [kg]													
K90R 25/5 (10 PCS)	E11KM-01040101102	25	7,0	10,0	15	7,0				M5		10	1	2	10	0,14													
K90R 25/5 (100 PCS)	E11KM-01040101100																	100	1,4										
K90R 25/6 (100 PCS)	E11KM-01040101200										10,0				14,0		M6		10	0,15									
K90R 25/6 (10 PCS)	E11KM-01040101202									7,5									100	1,5									
K90R 25/8 (100 PCS)	E11KM-01040101300									9,0	13,0				16,0		M8		10	0,15									
K90R 25/8 (10 PCS)	E11KM-01040101302															23,5		√			100	1,6							
K90R 25/10 (100 PCS)	E11KM-01040101400									11,0					18,0		M10				10	0,16							
K90R 25/10 (10 PCS)	E11KM-01040101402														15,0						100	1,55							
K90R 25/12 (100 PCS)	E11KM-01040101500									12,0							M12				10	0,16							
K90R 25/12 (10 PCS)	E11KM-01040101502														19,0						100	1,6							
K90R 25/14 (100 PCS)	E11KM-01040101600									14,0	18,0						M14				10	0,16							
K90R 25/14 (10 PCS)	E11KM-01040101602																				100	2,3							
K90R 35/6 (100 PCS)	E11KM-01040101700					35	8,5	12,0	17	7,5	10,0						M6		12	1	2	10	0,23						
K90R 35/6 (10 PCS)	E11KM-01040101702																										100	2,4	
K90R 35/8 (100 PCS)	E11KM-01040101800									9,0	13,0	18,0		M8		10	0,24												
K90R 35/8 (10 PCS)	E11KM-01040101802																	100				2,45							
K90R 35/10 (100 PCS)	E11KM-01040101900									11,0			27,0	M10	√			10				0,25							
K90R 35/10 (10 PCS)	E11KM-01040101902											15,0						100				2,4							
K90R 35/12 (100 PCS)	E11KM-01040102000									12,0		20,0		M12				10				0,24							
K90R 35/12 (10 PCS)	E11KM-01040102002																	100				2,45							
K90R 35/14 (100 PCS)	E11KM-01040102100									14,0	18,0	21,0		M14				10				0,24							
K90R 35/14 (10 PCS)	E11KM-01040102102													M12				100				3,25							
K90R 50/6 (100 PCS)	E11KM-01040102200	50	10,0	14,0	19					7,5	10,0			M6		14	1	2				10	0,33						
K90R 50/6 (10 PCS)	E11KM-01040102202																										100	3,4	
K90R 50/8 (100 PCS)	E11KM-01040102300													9,0	13,0							20,0		M8				100	3,5
K90R 50/8 (10 PCS)	E11KM-01040102302																											10	0,35
K90R 50/10 (100 PCS)	E11KM-01040102400									11,0				M10							100	3,5							
K90R 50/10 (10 PCS)	E11KM-01040102402											15,0	31,0		√						10	0,35							
K90R 50/12 (100 PCS)	E11KM-01040102500									12,0				M12							100	3,5							
K90R 50/12 (10 PCS)	E11KM-01040102502											23,0									10	0,35							
K90R 50/14 (100 PCS)	E11KM-01040102600									14,0				M14							100	3,7							
K90R 50/14 (10 PCS)	E11KM-01040102602											18,0									10	0,37							
K90R 50/16 (100 PCS)	E11KM-01040102700									16,0	18,0			M16							100	3,7							
K90R 50/16 (10 PCS)	E11KM-01040102702											28,0									10	0,37							
K90R 70/6 (100 PCS)	E11KM-01040102800					70	12,0	16,5	21	7,5	10,0			M6					16	1	2	100	4,7						
K90R 70/6 (10 PCS)	E11KM-01040102802																										10	0,47	
K90R 70/8 (100 PCS)	E11KM-01040102900									9,0	13,0			M8				100				4,85							
K90R 70/8 (10 PCS)	E11KM-01040102902											23,0						10				0,49							
K90R 70/10 (100 PCS)	E11KM-01040103000									11,0				M10				100				5,1							
K90R 70/10 (10 PCS)	E11KM-01040103002											15,0	35,0		√			10				0,51							
K90R 70/12 (100 PCS)	E11KM-01040103100									12,0				M12				100				5							
K90R 70/12 (10 PCS)	E11KM-01040103102																	10				0,5							
K90R 70/14 (100 PCS)	E11KM-01040103200									14,0				M14				100				5,2							
K90R 70/14 (10 PCS)	E11KM-01040103202											18,0	28,0					10				0,52							
K90R 70/16 (100 PCS)	E11KM-01040103300									16,0				M16				100				5,3							
K90R 70/16 (10 PCS)	E11KM-01040103302																	10				0,53							
K90R 95/8 (50 PCS)	E11KM-01040103400	95	13,5	18,0	24									M8		17	1	2				50	3,12						
K90R 95/8 (10 PCS)	E11KM-01040103402																											10	0,63
K90R 95/10 (50 PCS)	E11KM-01040103500									12,0	17,0			M10							50	3,1							
K90R 95/10 (10 PCS)	E11KM-01040103502											26,0									10	0,62							
K90R 95/12 (50 PCS)	E11KM-01040103600											18,0		M12							50	3,1							
K90R 95/12 (10 PCS)	E11KM-01040103602												37,0		√						10	0,62							
K90R 95/14 (50 PCS)	E11KM-01040103700									20,0				M14							50	3,6							
K90R 95/14 (10 PCS)	E11KM-01040103702											16,0									10	0,72							
K90R 95/16 (50 PCS)	E11KM-01040103800											22,0	29,0	M16							50	3,3							
K90R 95/16 (10 PCS)	E11KM-01040103802																				10	0,66							
K90R 95/20 (50 PCS)	E11KM-01040103900									20,0	24,0	35,0		M20							50	3,3							
K90R 95/20 (10 PCS)	E11KM-01040103902																				10	0,66							

Type	Index Ergom	Cross-section, mm/sm [mm ²]	d	D	a	c1	c2	W	H	Screw hole	UL	Socket code no.	Lz/s	Lz/w	Quantity in package [pcs]	Weight [kg]			
K90R 120/8 (50 PCS)	E11KM-01040103950	120	15,0	19,5	26	16,0	28,0			M8	√	19	1	2	50	3,8			
K90R 120/8 (10 PCS)	E11KM-01040103952									10					0,76				
K90R 120/10 (50 PCS)	E11KM-01040104000					12,0	17,0										M10	50	3,8
K90R 120/10 (10 PCS)	E11KM-01040104002																10	0,76	
K90R 120/12 (50 PCS)	E11KM-01040104100					18,0	29,0	43,0									M12	50	3,7
K90R 120/12 (10 PCS)	E11KM-01040104102																10	0,74	
K90R 120/16 (50 PCS)	E11KM-01040104300					16,0	22,0										M16	50	4,3
K90R 120/16 (10 PCS)	E11KM-01040104302																10	0,86	
K90R 120/20 (50 PCS)	E11KM-01040104400					20,0	24,0	35,0									M20	50	4,4
K90R 120/20 (10 PCS)	E11KM-01040104402																10	0,88	
K90R 150/10 (50 PCS)	E11KM-01040104500	150	16,5	21,0	30	17,0				M10	√	20	2	3	50	3,9			
K90R 150/10 (10 PCS)	E11KM-01040104502									10					0,78				
K90R 150/12 (50 PCS)	E11KM-01040104600					12,0	18,0										M12	50	4,3
K90R 150/12 (10 PCS)	E11KM-01040104602																10	0,86	
K90R 150/14 (50 PCS)	E11KM-01040104700					20,0	31,0	41,0									M14	50	4,3
K90R 150/14 (10 PCS)	E11KM-01040104702																10	0,86	
K90R 150/16 (50 PCS)	E11KM-01040104800					16,0	22,0										M16	50	4,2
K90R 150/16 (10 PCS)	E11KM-01040104802																10	0,84	
K90R 150/20 (50 PCS)	E11KM-01040104900					20,0	24,0	36,0									M20	50	4,5
K90R 150/20 (10 PCS)	E11KM-01040104902																10	0,9	
K90R 185/10 (50 PCS)	E11KM-01040104950	185	19,0	24,0	32	14,0				M10	√	23	2	3	50	6			
K90R 185/10 (10 PCS)	E11KM-01040104952									10					1,2				
K90R 185/12 (50 PCS)	E11KM-01040105000					22,0	35,0	46,0									M12	50	6
K90R 185/12 (10 PCS)	E11KM-01040105002																10	1,2	
K90R 185/14 (50 PCS)	E11KM-01040105100					16,0											M14	50	6,1
K90R 185/14 (10 PCS)	E11KM-01040105102																10	1,22	
K90R 185/16 (50 PCS)	E11KM-01040105200																M16	50	5,9
K90R 185/16 (10 PCS)	E11KM-01040105202																10	1,18	
K90R 185/20 (50 PCS)	E11KM-01040105300					20,0	24,0	38,0									M20	50	6
K90R 185/20 (10 PCS)	E11KM-01040105302																10	1,2	
K90R 240/10 (50 PCS)	E11KM-01040105350	240	21,0	26,0	38	14,0				M10	√	25	2	4	50	6,9			
K90R 240/10 (10 PCS)	E11KM-01040105352									10					1,38				
K90R 240/12 (50 PCS)	E11KM-01040105400					22,0											M12	50	7,1
K90R 240/12 (10 PCS)	E11KM-01040105402																10	1,42	
K90R 240/14 (50 PCS)	E11KM-01040105500					16,0	38,0	53,0									M14	50	7,4
K90R 240/14 (10 PCS)	E11KM-01040105502																10	1,48	
K90R 240/16 (50 PCS)	E11KM-01040105600																M16	50	7,1
K90R 240/16 (10 PCS)	E11KM-01040105602																10	14,2	
K90R 240/20 (50 PCS)	E11KM-01040105700					20,0	24,0										M20	50	7,2
K90R 240/20 (10 PCS)	E11KM-01040105702																10	1,44	
K90R 300/12 (10 PCS)	E11KM-01040105802	300	24,0	30,0	45	14,0	24,0	43,0	61,0	M12	-	28	2	-	10	2,8			
K90R 300/16 (10 PCS)	E11KM-01040106002					16,0				M16					10	2,28			

Lz/s - Number of crimping - wide, Lz/w - Number of crimping - narrow