

# Tubular spade terminals, KWR type

## FEATURES & BENEFITS

- spade terminal Cu, standard, with galvanic tin plating
- description of cable cross-section and terminal size on fin surface
- other designs on client's request

## LOGISTIC DATA

Quantity in package [pcs] 100

## MECHANICAL DATA

Material Cu  
Surface tin-plated

## CRIMPING SHAPE

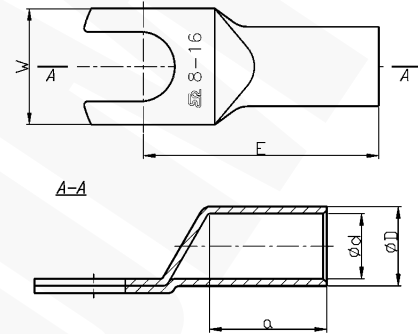
Number of crimping - narrow 1

## CERTIFICATES & STANDARDS

Design standard

## NOTE!

Sector-shaped conductors (sm) must be rounded with special dies.



Type	Index Ergom	Cross-section, mm <sup>2</sup> /sm [mm <sup>2</sup> ]	d	D	a	E	W	Screw hole	Socket code no.	Lz/s	Weight [kg]
KWR 0,75/4 (100 PCS)	E11KM-01030100200	0,75	1,3	2,8	6	13,0	6,5	M4	-	-	0,06
KWR 0,75/5 (100 PCS)	E11KM-01030100300					15,0	7,5	M5			
KWR 1,5/5 (100 PCS)	E11KM-01030100600	1,8	1,6	3,3	6	14,0	7,5	M5	-	-	0,09
KWR 1,5/6 (100 PCS)	E11KM-01030100700					16,0	9,0	M6			
KWR 2,5/4 (100 PCS)	E11KM-01030100900	2,5	2,3	4,2	6	13,0	7,0	M4	-	-	0,12
KWR 2,5/5 (100 PCS)	E11KM-01030101000					14,0	7,5	M5			
KWR 2,5/6 (100 PCS)	E11KM-01030101100					16,0	9,5	M6			
KWR 4/4 (100 PCS)	E11KM-01030101300	4	3,0	5,0	8	17,0	8,5	M4	-	-	0,21
KWR 4/5 (100 PCS)	E11KM-01030101400					19,0	9,0	M5			
KWR 4/6 (100 PCS)	E11KM-01030101500					18,0	10,0	M6			
KWR 6/4 (100 PCS)	E11KM-01030101700					18,0	9,5	M4			
KWR 6/5 (100 PCS)	E11KM-01030101800	6	3,6	5,6	9	19,0	9,5	M5	4	1	0,28
KWR 6/6 (100 PCS)	E11KM-01030101900					22,0	14,0	M6			
KWR 6/8 (100 PCS)	E11KM-01030102000					25,0	16,0	M8			
KWR 6/10 (100 PCS)	E11KM-01030102100	10	4,5	7,0	10	21,0	12,0	M10	7	1	0,33
KWR 10/5 (100 PCS)	E11KM-01030102200					21,0	12,0	M5			
KWR 10/6 (100 PCS)	E11KM-01030102300					21,5	12,0	M6			
KWR 10/8 (100 PCS)	E11KM-01030102400					23,5	15,0	M8			
KWR 10/10 (100 PCS)	E11KM-01030102500	16	5,5	8,5	13	25,5	17,0	M10	8	1	0,55
KWR 16/5 (100 PCS)	E11KM-01030102600					25,0	12,0	M5			
KWR 16/6 (100 PCS)	E11KM-01030102700					25,5	12,0	M6			
KWR 16/8 (100 PCS)	E11KM-01030102800					27,5	15,0	M8			
KWR 16/10 (100 PCS)	E11KM-01030102900	16	5,5	8,5	13	29,5	17,0	M10	8	1	0,98
						29,5	17,0	M10			

Lz/s - Number of crimping - wide