

# Aluminium-copper connectors, LMANW type

## FEATURES & BENEFITS

- tight connector Cu-Al, crimped parts as per DIN, not mechanically loaded
- description of cable cross-section, terminal size and crimping die number on crimped part surface
- for operation with MV equipment; connector shape ensures more even electromagnetic field distribution
- wide range of solutions facilitating connection of cables of various diameters

## LOGISTIC DATA

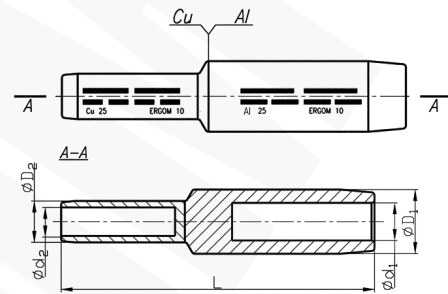
Quantity in package [pcs] 10

## MECHANICAL DATA

Material Al-Cu  
Surface uncoated

## NOTE!

- terminals are filled with special contact grease in Al section, packed in a separate foil bag;
- sector-shaped conductors must be rounded with special dies.



Type	Index Ergom	Cross-section, Al rm/sm [mm <sup>2</sup> ]	Cross-section, Al re/se [mm <sup>2</sup> ]	Cross-section, Cu rm/sm [mm <sup>2</sup> ]	L	d <sub>1</sub>	D <sub>1</sub>	d <sub>2</sub>	D <sub>2</sub>	Socket code no., Al	Lz/s Al	Lz/w Al	Socket code no., Cu	Lz/s Cu	Lz/w Cu	Weight [kg]			
LMANW 70/35 (10 PCS)	E13KC-01040100100	70	95	35	85	11,2	18,5	8,2	12,5	18	2	4	12	1	3	0,6			
LMANW 70/50 (10 PCS)	E13KC-01040100200			50	93			10,0	14,5				14						
LMANW 70/70 (10 PCS)	E13KC-01040100300			70	11,5			16,5	16				4				0,66		
LMANW 95/35 (10 PCS)	E13KC-01040100400	95	120	35	89	13,2	22,0	8,2	12,5	22	2	4	12	1	3	0,95			
LMANW 95/50 (10 PCS)	E13KC-01040100500			50	97			10,0	14,5				14				1		
LMANW 95/70 (10 PCS)	E13KC-01040100600			70	11,5			16,5	16				2				1,16		
LMANW 95/95 (10 PCS)	E13KC-01040100700			95	104			13,5	19,0				18				2	4	1,23
LMANW 120/35 (10 PCS)	E13KC-01040100800	120	150	35	89	14,7	23,0	8,2	12,5	22	2	4	12	2	4	0,92			
LMANW 120/50 (10 PCS)	E13KC-01040100900			50	97			10,0	14,5				14				1		
LMANW 120/70 (10 PCS)	E13KC-01040101000			70	11,5			16,5	16				2				1,05		
LMANW 120/95 (10 PCS)	E13KC-01040101100			95	104			13,5	19,0				18				2	4	1,25
LMANW 120/120 (10 PCS)	E13KC-01040101200			120	104			15,5	21,0				20				2	4	1,25
LMANW 150/70 (10 PCS)	E13KC-01040101300	150	185	70	101	16,3	25,0	11,5	16,5	25	2	4	16	1	3	1,05			
LMANW 150/95 (10 PCS)	E13KC-01040101400			95	108			13,5	19,0				18				1,4		
LMANW 150/120 (10 PCS)	E13KC-01040101500			120	15,5			21,0	20				2				4	1,55	
LMANW 150/150 (10 PCS)	E13KC-01040101600			150	17,0			23,5	22				1,65						
LMANW 185/70 (10 PCS)	E13KC-01040101700	185	240	70	105	18,3	28,5	11,5	16,5	28	2	5	16	1	3	1,7			
LMANW 185/95 (10 PCS)	E13KC-01040101800			95	13,5			19,0	18				1,73						
LMANW 185/120 (10 PCS)	E13KC-01040101900			120	112			15,5	21,0				20				2	4	1,75
LMANW 185/150 (10 PCS)	E13KC-01040102000			150	17,0			23,5	22				2,15						
LMANW 185/185 (10 PCS)	E13KC-01040102100			185	117			19,0	25,5				25				2,05		

Type	Index Ergom	Cross-section, Al rm/sm [mm <sup>2</sup> ]	Cross-section, Al re/se [mm <sup>2</sup> ]	Cross-section, Cu rm/sm [mm <sup>2</sup> ]	L	d <sub>1</sub>	D <sub>1</sub>	d <sub>2</sub>	D <sub>2</sub>	Socket code no., Al	Lz/s Al	Lz/w Al	Socket code no., Cu	Lz/s Cu	Lz/w Cu	Weight [kg]
LMANW 240/120 (10 PCS)	E13KC-01040102200	240	300	120	123	21,0	32,0	15,5	21,0	32	2	5	20	2	4	2,5
LMANW 240/150 (10 PCS)	E13KC-01040102300			150				17,0	23,5				22			2,65
LMANW 240/185 (10 PCS)	E13KC-01040102400			185	19,0			25,5	25				2,7			
LMANW 240/240 (10 PCS)	E13KC-01040102500			240	21,5			29,0	28				3,15			
LMANW 300/150 (10 PCS)	E13KC-01040102600	300	-	150	124	23,3	34,0	17,0	23,5	34	3	-	22	2	-	3,6
LMANW 300/185 (10 PCS)	E13KC-01040102700			185				19,0	25,5				25			3,7
LMANW 300/240 (10 PCS)	E13KC-01040102800			240	21,5			29,0	28				4,4			
LMANW 300/300 (10 PCS)	E13KC-01040102900			300	24,5			32,0	32				4,8			

Lz/s Al - Number of crimping - wide Al, Lz/w Al - Number of crimping - narrow Al, Lz/s Cu - Number of crimping - wide Cu, Lz/w Cu - Number of crimping - narrow Cu