

# Aluminium-copper connectors for sector-shaped conductors, LMANS type

## FEATURES & BENEFITS

- tight connector Cu-Al, crimped part as per DIN Al crimping part designed for sector-shaped cable conductors with SE/SM
- description of cable cross-section, terminal size and crimping die number on crimped part surface
- wide range of solutions facilitating connection of cables of various diameters
- not mechanically loaded

## LOGISTIC DATA

Quantity in package [pcs] 10

## MECHANICAL DATA

Material Al-Cu  
Surface uncoated

## CRIMPING SHAPE

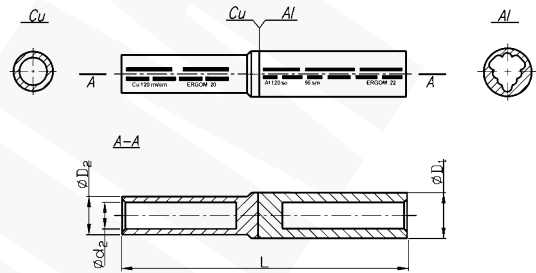
Number of crimping - wide Al 3

## CERTIFICATES & STANDARDS

Design DIN 46235 – concerns diameters the tubular part (Cu)  
DIN 46329 – concerns outer diameter the tubular part (Al)

## NOTE!

- sector-shaped wires in Cu section must be rounded with special dies;
- sector-shaped wires in Al no conductor rounding required;
- terminals are filled with special contact grease in Al section;
- packed in a separate foil bag.



Type	Index Ergom	Cross-section, Al se [mm <sup>2</sup> ]	Cross-section, Al sm [mm <sup>2</sup> ]	Cross-section, Cu rm/sm [mm <sup>2</sup> ]	L	D <sub>1</sub>	d <sub>2</sub>	D <sub>2</sub>	Socket code no., Al	Lz/w Al	Socket code no., Cu	Lz/s Cu	Lz/w Cu	Weight [kg]
LMANS 50/16 (10 PCS)	E13KC-01080001000	50	35	16	77	16,0	5,6	8,4	16	5	8	1	2	0,29
LMANS 50/25 (10 PCS)	E13KC-01080001100			25			7,0	9,9			10			0,33
LMANS 50/35 (10 PCS)	E13KC-01080001200			35			8,2	12,4			12			0,4
LMANS 50/50 (10 PCS)	E13KC-01080001300			50			10,0	14,3			14			0,49
LMANS 70/16 (10 PCS)	E13KC-01080001400	70	50	16	86	18,5	5,6	8,4	18	6	8	2	3	0,4
LMANS 70/25 (10 PCS)	E13KC-01080001500			25			7,0	9,9			10			0,42
LMANS 70/35 (10 PCS)	E13KC-01080001600			35			8,2	12,4			12			0,5
LMANS 70/50 (10 PCS)	E13KC-01080001700			50			10,0	14,3			14			0,63
LMANS 70/70 (10 PCS)	E13KC-01080001800			70			11,5	16,3			16			0,7
LMANS 70/95 (10 PCS)	E13KC-01080001900			95			18,8				18			
LMANS 70/120 (10 PCS)	E13KC-01080002000	120	20,8		20	0,88								
LMANS 95/16 (10 PCS)	E13KC-01080002100	95	70	16	93	22,0	5,6	8,4	22	6	8	1	2	0,57
LMANS 95/25 (10 PCS)	E13KC-01080002200			25			7,0	9,9			10			0,63
LMANS 95/35 (10 PCS)	E13KC-01080002300			35			8,2	12,4			12			0,71
LMANS 95/50 (10 PCS)	E13KC-01080002400			50			10,0	14,3			14			0,82
LMANS 95/70 (10 PCS)	E13KC-01080002500			70			11,5	16,3			16			0,9
LMANS 95/95 (10 PCS)	E13KC-01080002600			95			13,5	18,8			18			1,07
LMANS 95/120 (10 PCS)	E13KC-01080002700	120	15,5	20,8	20	1,14								

Type	Index Ergom	Cross-section, Al se [mm <sup>2</sup> ]	Cross-section, Al sm [mm <sup>2</sup> ]	Cross-section, Cu mm/sm [mm <sup>2</sup> ]	L	D <sub>1</sub>	d <sub>2</sub>	D <sub>2</sub>	Socket code no., Al	Lz/w Al	Socket code no., Cu	Lz/s Cu	Lz/w Cu	Weight [kg]				
LMANS 120/16 (10 PCS)	E13KC-01080002800	120	95	16	93	23,0	5,6	8,4	22	6	8	1	2	0,6				
LMANS 120/25 (10 PCS)	E13KC-01080002900			25			7,0	9,9			10			0,63				
LMANS 120/35 (10 PCS)	E13KC-01080003000			35			8,2	12,4			12			0,71				
LMANS 120/50 (10 PCS)	E13KC-01080003100			50	102	23,0	10,0	14,3			14	2	3	0,82				
LMANS 120/70 (10 PCS)	E13KC-01080003200			70			11,5	16,3						16	0,9			
LMANS 120/95 (10 PCS)	E13KC-01080003300			95	108	23,0	13,5	18,8			18	4	1,08					
LMANS 120/120 (10 PCS)	E13KC-01080003400			120			15,5	20,8					20	1,14				
LMANS 150/16 (10 PCS)	E13KC-01080003500			150	120	16	97	25,0			5,6	8,4	25	6	8	1	2	0,73
LMANS 150/25 (10 PCS)	E13KC-01080003600					25					7,0	9,9			10			0,74
LMANS 150/35 (10 PCS)	E13KC-01080003700	35	8,2			12,4			12	0,83								
LMANS 150/50 (10 PCS)	E13KC-01080003800	50	106			25,0	10,0	14,3	14	3	0,94							
LMANS 150/70 (10 PCS)	E13KC-01080004000	70					11,5	16,3			16	1,03						
LMANS 150/95 (10 PCS)	E13KC-01080004100	95	112			25,0	13,5	18,8	18	2	4	1,17						
LMANS 150/120 (10 PCS)	E13KC-01080004200	120					15,5	20,8				20			1,26			
LMANS 150/150 (10 PCS)	E13KC-01080004300	150	17,0			23,3	22	1,44										
LMANS 185/25 (10 PCS)	E13KC-01080004380	185	150			25	100	28,5	7,0	9,9	28	6			10	1	2	1,05
LMANS 185/35 (10 PCS)	E13KC-01080004390			35	8,2	12,4			12	1,17								
LMANS 185/50 (10 PCS)	E13KC-01080004400			50	109	28,5			10,0	14,3			14	3	1,23			
LMANS 185/70 (10 PCS)	E13KC-01080004500			70			11,5	16,3	16	1,36								
LMANS 185/95 (10 PCS)	E13KC-01080004600			95	115	28,5	13,5	18,8	18	2			4	1,51				
LMANS 185/120 (10 PCS)	E13KC-01080004700			120			15,5	20,8						20	1,58			
LMANS 185/150 (10 PCS)	E13KC-01080004800			150	17,0	23,3	22	1,79										
LMANS 185/185 (10 PCS)	E13KC-01080004900			185	19,0	25,3	25	1,96										
LMANS 240/50 (10 PCS)	E13KC-01080005000			240	185	50	121	32,0	10,0	14,3			32	8	14	2	4	1,64
LMANS 240/70 (10 PCS)	E13KC-01080005100	70	11,5			16,3			16	1,71								
LMANS 240/95 (10 PCS)	E13KC-01080005200	95	13,5			18,8			18	2,01								
LMANS 240/120 (10 PCS)	E13KC-01080005300	120	127			32,0	15,5	20,8	20	2	4	2,1						
LMANS 240/150 (10 PCS)	E13KC-01080005400	150					17,0	23,3				22			2,3			
LMANS 240/185 (10 PCS)	E13KC-01080005500	185	132			32,0	19,0	25,3	25	5	2,45							
LMANS 240/240 (10 PCS)	E13KC-01080005600	240					21,5	28,7			28	-			2,8			
LMANS 300/150 (10 PCS)	E13KC-01080005700	300	240			150	130	34,0	17,0	23,3	34	8			22	2	-	2,9
LMANS 300/185 (10 PCS)	E13KC-01080005800					185			19,0	25,3					25			3,3
LMANS 300/240 (10 PCS)	E13KC-01080005900			240	21,5	28,7	28	3,6										
LMANS 300/300 (10 PCS)	E13KC-01080006000			300	24,5	32,0	32	4,2										

Lz/s Al - Number of crimping - wide Al, Lz/w Al - Number of crimping - narrow Al, Lz/s Cu - Number of crimping - wide Cu, Lz/w Cu - Number of crimping - narrow Cu