

Aluminium-copper connectors, LMAN type

FEATURES & BENEFITS

- tight connector Cu-Al, crimped part as per DIN
- description of cable cross-section, terminal size and crimping die number on crimped part surface
- wide range of solutions facilitating connection of cables of various diameters, not mechanically loaded
- for voltage below 1 kV acc. to EN IEC 61238-1-1:2019
for the voltage range 1-36 kV acc. to EN IEC 61238-1-3:2019

MECHANICAL DATA

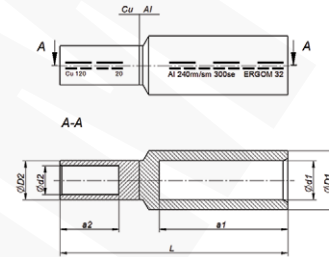
Material	Al-Cu
Surface	uncoated

CERTIFICATES & STANDARDS

Standards	EN IEC 61238-1-1:2019 EN IEC 61238-1-3:2019 - mechanical strength Class 1 - short-circuit resistance Class A for range of rated cross-section 25 - 240 mm ² Al and 10 - 240 mm ² Cu
Design	DIN 46235 – concerns diameters the tubular part (Cu) DIN 46329 – concerns diameters the tubular part (Al)

NOTE!

- terminals are filled with special contact grease in Al section, packed in a separate foil bag;
- sector-shaped conductors must be rounded with special dies.



Type	Index Ergom	Cross-section, Al mm ²	Cross-section, Al re/se [mm ²]	Cross-section, Cu mm ²	L	d ₁	D ₁	d ₂	D ₂	a ₁	a ₂	Socket code no., Al	Lz/s Al	Lz/w Al	Socket code no., Cu	Lz/s Cu	Lz/w Cu	Quantity in package [pcs]	Weight [kg]	
LMAN 25/10	E13KC-01030100102	25	35	10	57	6,8	12,0	4,5	6,0	14	12	2	4	6	-	10	2	10	0,16	
LMAN 25/16	E13KC-01030100202			16	63			5,5	8,5	30				8	1				2	0,21
LMAN 25/25	E13KC-01030100302			25	70			7,0	10,0	20				10						0,22
LMAN 25/35	E13KC-01030100402	35	65	8,2	12,4	31	12	0,36												
LMAN 35/16	E13KC-01030100502	35	50	16	75	8,0	14,0	5,5	8,5	20	14	3	5	8	1	2	10	0,3		
LMAN 35/25	E13KC-01030100602			25	80			7,0	10,0					42				10	0,32	
LMAN 35/35	E13KC-01030100702			35	85			8,2	12,5					20				12	0,97	
LMAN 35/50	E13KC-01030100802	50	86	10,0	14,3	43	14	0,54												
LMAN 50/16	E13KC-01030101002	50	70	16	87	9,8	16,0	5,5	8,5	20	16	3	5	8	1	2	10	0,37		
LMAN 50/25	E13KC-01030101102			25	90			7,0	10,0					42				10	0,39	
LMAN 50/35	E13KC-01030101202			35	95			8,2	12,5					20				12	0,45	
LMAN 50/50	E13KC-01030101302	50	83	10,0	14,5	28	14	0,54												
LMAN 70/16	E13KC-01030101402	70	95	16	93	11,2	18,5	5,6	8,4	28	18	3	6	8	2	3	10	0,53		
LMAN 70/25	E13KC-01030101502			25	100			7,0	9,9					53				24	10	0,54
LMAN 70/35	E13KC-01030101602			35	85			8,2	12,5					20				12	0,6	
LMAN 70/50	E13KC-01030101702	50	95	10,0	14,5	52	28	14	0,7											
LMAN 70/70	E13KC-01030101802	70	102	11,5	16,5	53	39	16	0,75											
LMAN 70/95	E13KC-01030101902	95	102	13,5	18,8			18	2	1,1										
LMAN 70/120	E13KC-01030102002	120	102	15,5	20,8	20	4	1,2												

Date of publication: 11/1/2024

Graphic project, pictures and all technical data and descriptions in this catalogue are protected by Polish and international copyright laws. Names and logos used in the content of this catalogue may be trademarks, for which ZAE Ergom Sp. z o.o. has exclusive protection rights. ZAE ERGOM reserves the right for changes in the assortment and parameters of its products.

Type	Index Ergom	Cross-section, Al rm/sm [mm ²]	Cross-section, Al re/se [mm ²]	Cross-section, Cu rm/sm [mm ²]	L	d ₁	D ₁	d ₂	D ₂	a ₁	a ₂	Socket code no., Al	Lz/s Al	Lz/w Al	Socket code no., Cu	Lz/s Cu	Lz/w Cu	Quantity in package [pcs]	Weight [kg]																									
LMAN 95/16	E13KC-01030102102	95	120	16	97	13,2	22,0	5,5	8,5	22	3	6	8	1	2	10	10	0,78																										
LMAN 95/25	E13KC-01030102202			25				89	7,0										10,0	20	10	0,8																						
LMAN 95/35	E13KC-01030102302			35					8,2										12,5			0,86																						
LMAN 95/50	E13KC-01030102402			50					10,0										14,5	56		0,96																						
LMAN 95/70	E13KC-01030102502			70					11,5										16,5			1,02																						
LMAN 95/95	E13KC-01030102602			95					13,5										19,0			1,17																						
LMAN 95/120	E13KC-01030102702			120					15,5										21,0			1,26																						
LMAN 120/16	E13KC-01030102802			120				150	16										97	14,7	23,0	5,6	8,4	22	3	6	8	3	3	10	10	0,83												
LMAN 120/25	E13KC-01030102902								25														7,0										9,9	57	24	0,84								
LMAN 120/35	E13KC-01030103002	35			8,2	12,5	20			0,9																																		
LMAN 120/50	E13KC-01030103102	50			10,0	14,5				1																																		
LMAN 120/70	E13KC-01030103202	70			11,5	16,5	56			1,1																																		
LMAN 120/95	E13KC-01030103302	95			13,5	19,0				1,22																																		
LMAN 120/120	E13KC-01030103402	120			15,5	21,0				1,26																																		
LMAN 150/16	E13KC-01030103502	150	185		16	101	16,3		25,0	5,6	8,3	25	3	6	8	1	2	10				10	1,03																					
LMAN 150/25	E13KC-01030103602				25						7,0																						9,9	61	24	1,05								
LMAN 150/35	E13KC-01030103702			35				8,2		12,5	20									1,11																								
LMAN 150/50	E13KC-01030103802			50				10,0		14,5										1,21																								
LMAN 150/70	E13KC-01030103902			70				11,5		16,5	56									1,26																								
LMAN 150/95	E13KC-01030104002			95				13,5		19,0	60									1,43																								
LMAN 150/120	E13KC-01030104102			120				15,5		21,0	35									1,48																								
LMAN 150/150	E13KC-01030104202			150				17,0		23,5										1,63																								
LMAN 185/50	E13KC-01030104302			185	240			50		105	18,3								28,5	10,0	14,5			28	3	6	14	2	4	10	10	1,58												
LMAN 185/70	E13KC-01030104402	70				11,5	16,5					1,64																																
LMAN 185/95	E13KC-01030104502	95				13,5	19,0	60				1,8																																
LMAN 185/120	E13KC-01030104602	120				15,5	21,0	35				1,85																																
LMAN 185/150	E13KC-01030104702	150				17,0	23,5					2,02																																
LMAN 185/185	E13KC-01030104802	185				19,0	25,5	40				2,17																																
LMAN 240/50	E13KC-01030104902	240	300			50	117					10,0	14,5				14			3			2,06																					
LMAN 240/70	E13KC-01030105002					70							11,5																				16,5			2,12								
LMAN 240/95	E13KC-01030105102					95							13,5																				19,0			2,28								
LMAN 240/120	E13KC-01030105202			120		15,5				21,0	70	35	2,34																															
LMAN 240/150	E13KC-01030105302			150		17,0				23,5			2,5																															
LMAN 240/185	E13KC-01030105402			185		19,0				25,5			2,65																															
LMAN 240/240	E13KC-01030105502			240		21,5				29,0	40		2,91																															
LMAN 300/120	E13KC-01030105602			300	-	120				124			15,5						21,0								20		4			2,78												
LMAN 300/150	E13KC-01030105702					150													17,0														23,5	35		3,11								
LMAN 300/185	E13KC-01030105802	185				19,0	25,5	70	40				3,27																															
LMAN 300/240	E13KC-01030105902	240				21,5	29,0						3,75																															
LMAN 300/300	E13KC-01030106002	300				24,5	32,0	50					4,17																															
LMAN 400/150	E13KC-01030107102	400	-			150	127						17	23,5				22		4			3,95																					
LMAN 400/185	E13KC-01030107202					185								19																			25,5			4,21								
LMAN 400/240	E13KC-01030107302					240								26,0																			38,5	21,5	29	73	38	4	-	28	2	-	1	4,38
LMAN 400/300	E13KC-01030107402					300								24,5																			32	50			32		-					4,87
LMAN 400/400	E13KC-01030107502			400		27,5				38	70			38										3						5,1														

Lz/s Al - Number of crimping - wide Al, Lz/w Al - Number of crimping - narrow Al, Lz/s Cu - Number of crimping - wide Cu, Lz/w Cu - Number of crimping - narrow Cu