

# Low-cost “butt splice” connectors, LE type

## FEATURES & BENEFITS

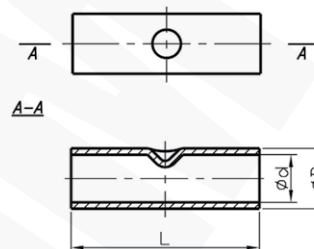
- connector Cu, low-cost version, with galvanic tin plating, to make “butt splice” cable connections
- central stamping guarantees correct length of conductor insertion
- not mechanically loaded

## MECHANICAL DATA

Material	Cu
Surface	tin-plated

## CERTIFICATES & STANDARDS

Design	economical
--------	------------



Type	Index Ergom	Cross-section, m/sm [mm <sup>2</sup> ]	d	D	L	Socket code no.	Lz/s	Lz/w	Quantity in package [pcs]	Weight [kg]
LE 0,5-12 (100 PCS)	E11KM-01060201701	0,1+0,5	1,2	2	12	-	-	1 - 1	100	0,07
LE 1-20 (100 PCS)	E11KM-01060201851	1	1,7	3,3	20	-	-	1 - 1	100	0,09
LE 1-15 (100 PCS)	E11KM-01060201801				15					0,08
LE 2,5-15 (100 PCS)	E11KM-01060201901	1,5+2,5	2,4	4	15	-	-	1 - 1	100	0,1
LE 2,5-20 (100 PCS)	E11KM-01060201951				20					0,14
LE 6-20 (100 PCS)	E11KM-01060202001	4+6	3,6	5,5	20	-	-	1 - 1	100	0,18
LE 6-25 (100 PCS)	E11KM-01060202051				25					0,27
LE 10 (100 PCS)	E11KM-01060202100	10	4,7	6,9	25	6	1 - 1	1 - 1	100	0,4
LE 16 (100 PCS)	E11KM-01060202200	16	5,6	7,8	30	7	1 - 1	2 - 2	100	0,6
LE 25 (100 PCS)	E11KM-01060202300	25	7,1	9,5	30	9	1 - 1	2 - 2	100	0,8
LE 35 (100 PCS)	E11KM-01060202400	35	8,2	11,0	35	11	1 - 1	2 - 2	100	1,4
LE 50 (100 PCS)	E11KM-01060202500	50	9,5	12,5	35	13	1 - 1	2 - 2	100	1,6
LE 70 (100 PCS)	E11KM-01060202600	70	11,5	15,0	45	15	1 - 1	3 - 3	100	2,9
LE 95 (50 PCS)	E11KM-01060202700	95	13,5	17,0	47	17	1 - 1	3 - 3	50	1,8
LE 120 (50 PCS)	E11KM-01060202800	120	14,5	19,0	52	C120	-	2 - 2	50	2,8
LE 150 (50 PCS)	E11KM-01060202900	150	16,2	21,0	59	C150	-	3 - 3	50	3,4
LE 185 (50 PCS)	E11KM-01060203000	185	18,0	23,0	65	C185	-	4 - 4	50	4,8
LE 240 (50 PCS)	E11KM-01060203100	240	20,6	26,0	75	C240	-	4 - 4	50	6,02

Lz/s - Number of crimping - wide, Lz/w - Number of crimping - narrow