

Insulated “butt splice” connectors, KLI...PC type

FEATURES & BENEFITS

- ☒ connector Cu, with polycarbonate insulation, to make “butt splice” cable connections
- ☒ to operate in wider temperature ranges than terminals with polyamide insulation
- ☒ insulating sleeve: enhances resistance to vibrations, mitigates short-circuit risk
- ☒ sleeve colours facilitate cross-section identification

LOGISTIC DATA

Quantity in package [pcs] 100

MECHANICAL DATA

Insulation polycarbonate

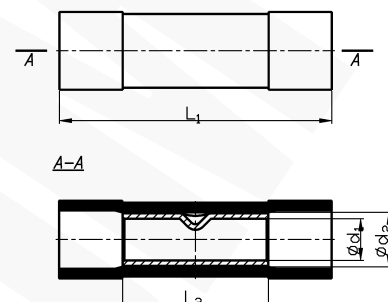
Material Cu

Surface tin-plated

Operating temperature [°C] -50 ÷ +120

DIMENSIONS

L₂ 15



Type	Index Ergom	Cross-section [mm²]	Insulation colour	L ₁	d ₁	d ₂	Weight [kg]
KLI 1 PC (100 PCS)	E09KO-02060200101	0,75+1,0	red	25	1,7	4,0	0,11
KLI 2,5 PC (100 PCS)	E09KO-02060200201	1,5+2,5	blue	25	2,3	4,5	0,14
KLI 6 PC (100 PCS)	E09KO-02060200301	4+6	yellow	27	3,4	6,3	0,23