

# Butt splice connectors for compacted wires, CKL type

## FEATURES & BENEFITS

- connector Cu, with galvanic tin plating
- central stamping guarantees correct length of conductor insertion
- to make "butt splice" cable connections not mechanically loaded
- for cables with "RMC" round multi-wire profiles, Class 2 as per EN60228 2007

## MECHANICAL DATA

<b>Material</b>	Cu
<b>Surface</b>	tin-plated

## CERTIFICATES & STANDARDS

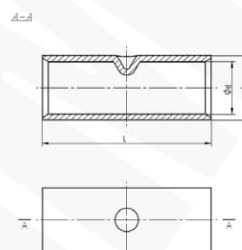
<b>Standards</b>	EN IEC 61238-1-1:2019 EN IEC 61238-1-3:2019 - mechanical strength Class 1 - Short-circuit resistance Class A for range of rated cross-section 25 - 240 mm <sup>2</sup>
<b>UL certificate</b>	E475284

## NOTE!

Sector-shaped conductors (sm) must be rounded with special dies.

In the technical documentation of cable and wire manufacturers, the RMC designation is also known as RMV.

UL certificate - visit [www.ergom.com](http://www.ergom.com)



Type	Index Ergom	Cross-section, rmc [mm <sup>2</sup> ]	d	D	L	Socket code no.	Lz	Quantity in package [pcs]	Weight [kg]
<b>CKL 10 (50 PCS)</b>	E11KM-05060200200	10	4,2	6,2	30	C10	1-1	50	0,24
<b>CKL 16 (50 PCS)</b>	E11KM-05060200300	16	5,5	7,7	30	C16	1-1	50	0,32
<b>CKL 25 (50 PCS)</b>	E11KM-05060200400	25	6,6	9	30	C25	1-1	50	0,42
<b>CKL 35 (50 PCS)</b>	E11KM-05060200500	35	7,7	10,6	32	C35	1-1	50	0,62
<b>CKL 50 (25 PCS)</b>	E11KM-05060200600	50	9,2	12,4	32	C50	1-1	25	0,41
<b>CKL 70 (25 PCS)</b>	E11KM-05060200700	70	11	14,6	48	C70	1-1	25	1
<b>CKL 95 (25 PCS)</b>	E11KM-05060200800	95	13	17	48	C95	1-1	25	1,03
<b>CKL 120 (25 PCS)</b>	E11KM-05060200900	120	14,5	19	50	C120	1-1	25	1,36
<b>CKL 150 (10 PCS)</b>	E11KM-05060201000	150	16,2	21	52	C150	2-2	10	0,7
<b>CKL 185 (10 PCS)</b>	E11KM-05060201100	185	18	23	56	C185	2-2	10	0,85
<b>CKL 240 (10 PCS)</b>	E11KM-05060201200	240	20,6	26	58	C240	2-2	10	1,05

Lz - Number of crimping