

Compression connectors, LA ... type

FEATURES & BENEFITS

- connector Al, crimped part as per DIN, without galvanic tin plating, to make "butt splice" cable connections, not mechanically loaded
- description of cable cross-section, crimping die number on crimped part surface, cable cross-section change impossible
- central stamping guarantees correct length of conductor insertion
- for voltage below 1 kV acc. to EN IEC 61238-1-1:2019
for the voltage range 1-36 kV acc. to EN IEC 61238-1-3:2019

MECHANICAL DATA

Material	Al
Surface	uncoated

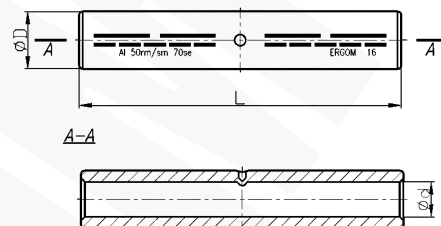
CERTIFICATES & STANDARDS

Standards	EN IEC 61238-1-1:2019 EN IEC 61238-1-3:2019 - mechanical strength Class 1 - short-circuit resistance Class A for connectors LA 16-300mm ² and LAC 16 - 300 mm ²
Design	DIN 46267/2 (concerns cross-sections: 25-500 mm ²)

NOTE!

- LA terminals are filled with special contact grease, packed in a separate foil bag;
- sector-shaped conductors must be rounded with special dies.

LA...BS - without contact grease;
LAC - tin-plated only on requested



Type	Index Ergom	Cross-section, re/se [mm ²]	Cross-section, rm/sm [mm ²]	d	D	L	Grease	Socket code no.	Lz/s	Lz/w	Quantity in package [pcs]	Weight [kg]
LA 10 (100 PCS)	E12KA-01100100100	16	10	5,0	10,0	55	contact grease	10	1-1	3-3	100	1,06
LA 10 (10 PCS)	E12KA-01100100102										10	0,11
LA 16 (100 PCS)	E12KA-01100100200	25	16	5,6	12,0	55	contact grease	12	1-1	3-3	100	1,5
LA 16 (10 PCS)	E12KA-01100100202										10	0,15
LA 25 (100 PCS)	E12KA-01100100300	35	25	6,8	12,0	70	contact grease	12	2-2	4-4	100	1,63
LA 25 (10 PCS)	E12KA-01100100302										10	0,17
LA 35 (100 PCS)	E12KA-01100100400	50	35	8,0	14,0	85	contact grease	14	2-2	5-5	100	2,63
LA 35 (10 PCS)	E12KA-01100100402										10	0,27
LA 50 (100 PCS)	E12KA-01100100500	70	50	9,8	16,0	85	contact grease	16	2-2	5-5	100	3,35
LA 50 (10 PCS)	E12KA-01100100502										10	0,34
LA 70 (100 PCS)	E12KA-01100100600	95	70	11,2	18,5	105	contact grease	18	3-3	6-6	100	5,2
LA 70 (10 PCS)	E12KA-01100100602										10	0,52
LA 95 (50 PCS)	E12KA-01100100750	120	95	13,2	22,0	105	contact grease	22	3-3	6-6	50	3,7
LA 95 (10 PCS)	E12KA-01100100752										10	0,74
LA 120 (50 PCS)	E12KA-01100100850	150	120	14,7	23,0	105	contact grease	22	3-3	6-6	50	3,9
LA 120 (10 PCS)	E12KA-01100100852										10	0,78
LA 150 (50 PCS)	E12KA-01100100900	185	150	16,3	25,0	125	contact grease	25	3-3	7-7	50	4,75
LA 150 (10 PCS)	E12KA-01100100902										10	0,95
LA 185 (50 PCS)	E12KA-01100101000	240	185	18,3	28,5	125	contact grease	28	3-3	7-7	50	7,9
LA 185 (10 PCS)	E12KA-01100101002										10	1,58
LA 240 (50 PCS)	E12KA-01100101100	300	240	21,0	32,0	145	contact grease	32	3-3	8-8	50	9,3
LA 240 (10 PCS)	E12KA-01100101102										10	1,86
LA 300 (25 PCS)	E12KA-01100101200	-	300	23,3	34,0	145	contact grease	34	3-3	-	25	5
LA 300 (10 PCS)	E12KA-01100101202										10	2

Type	Index Ergom	Cross-section, re/se [mm ²]	Cross-section, rm/sm [mm ²]	d	D	L	Grease	Socket code no.	Lz/s	Lz/w	Quantity in package [pcs]	Weight [kg]
LA 400 (25 PCS)	E12KA-01100101300	-	400	26,0	38,5	210	contact grease	38	4-4	-	25	9,3
LA 400	E12KA-01100101304										1	0,38
LA 500 (25 PCS)	E12KA-01100101400	-	500	29,0	44,0	210	contact grease	44	4-4	-	25	12,5
LA 500	E12KA-01100101404										1	0,5
LA 10 BS (100 PCS)	E12KA-01100200100	16	10	5,0	10,0	55	without contact grease	10	1-1	3-3	100	1,06
LA 10 BS (10 PCS)	E12KA-01100200102										10	0,11
LA 16 BS (100 PCS)	E12KA-01100200200	25	16	5,6	12,0	55	without contact grease	12	1-1	3-3	100	1,5
LA 16 BS (10 PCS)	E12KA-01100200202										10	0,15
LA 25 BS (100 PCS)	E12KA-01100200300	35	25	6,8	12,0	70	without contact grease	12	2-2	4-4	100	1,63
LA 25 BS (10 PCS)	E12KA-01100200302										10	0,17
LA 35 BS (100 PCS)	E12KA-01100200400	50	35	8,0	14,0	85	without contact grease	14	2-2	5-5	100	2,63
LA 35 BS (10 PCS)	E12KA-01100200402										10	0,27
LA 50 BS (100 PCS)	E12KA-01100200500	70	50	9,8	16,0	85	without contact grease	16	2-2	5-5	100	3,35
LA 50 BS (10 PCS)	E12KA-01100200502										10	0,34
LA 70 BS (100 PCS)	E12KA-01100200600	95	70	11,2	18,5	105	without contact grease	18	3-3	6-6	100	5,2
LA 70 BS (10 PCS)	E12KA-01100200602										10	0,52
LA 95 BS (50 PCS)	E12KA-01100200750	120	95	13,2	22,0	105	without contact grease	22	3-3	6-6	50	3,7
LA 95 BS (10 PCS)	E12KA-01100200752										10	0,74
LA 120 BS (50 PCS)	E12KA-01100200800	150	120	14,7	23,0	105	without contact grease	22	3-3	6-6	50	3,9
LA 120 BS (10 PCS)	E12KA-01100200802										10	0,78
LA 150 BS (50 PCS)	E12KA-01100200900	185	150	16,3	25,0	125	without contact grease	25	3-3	7-7	50	4,75
LA 150 BS (10 PCS)	E12KA-01100200902										10	0,95
LA 185 BS (50 PCS)	E12KA-01100201000	240	185	18,3	28,5	125	without contact grease	28	3-3	7-7	50	7,9
LA 185 BS (10 PCS)	E12KA-01100201002										10	1,58
LA 240 BS (50 PCS)	E12KA-01100201100	300	240	21,0	32,0	145	without contact grease	32	3-3	8-8	50	9,3
LA 240 BS (10 PCS)	E12KA-01100201102										10	1,86
LA 300 BS (25 PCS)	E12KA-01100201200	-	300	23,3	34,0	145	without contact grease	34	3-3	-	25	5
LA 300 BS (10 PCS)	E12KA-01100201202										10	2
LA 400 BS (25 PCS)	E12KA-01100201300	-	400	26,0	38,5	210	without contact grease	38	4-4	-	25	9,3
LA 400 BS	E12KA-01100201302										1	0,37
LA 500 BS (25 PCS)	E12KA-01100201400	-	500	29,0	44,0	210	without contact grease	44	4-4	-	25	12,5
LA 500 BS	E12KA-01100201402										1	0,5

Lz/s - Number of crimping - wide, Lz/w - Number of crimping - narrow