

Reducing tubular cable connectors with barrier, LAP .../... type

FEATURES & BENEFITS

- tight connector Al, crimped part as per DIN, without galvanic tin plating
- description of cable cross-section, crimping die number on crimped part surface
- cable cross-section change impossible
- not mechanically loaded

LOGISTIC DATA

Quantity in package [pcs] 10

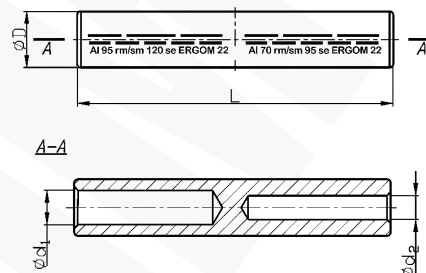
MECHANICAL DATA

Material Al
Surface uncoated

NOTE!

- terminals are filled with special contact grease, packed in a separate foil bag;
- sector-shaped conductors must be rounded with special dies.
- larger recommended number of crimps always refers to a larger ID of the connector.

Tin version on request.



Type	Index Ergom	Cross-section, d ₁ mm/sm [mm ²]	Cross-section, d ₁ re/se [mm ²]	Cross-section, d ₂ mm/sm [mm ²]	Cross-section, d ₂ re/se [mm ²]	D	L	d ₁	d ₂	Socket code	Lz/s	Lz/w	Weight [kg]
LAP 16/10 (10 PCS)	E12KA-01120200102	16	25	10	16	12,0	75	5,6	4,5	12	2-1	4-2	0,2
LAP 25/10 (10 PCS)	E12KA-01120200202	25	16										
LAP 25/16 (10 PCS)	E12KA-01120200302	35	50	16	25	14,0	90	8,0	5,6	14	2-2	5-4	0,3
LAP 35/16 (10 PCS)	E12KA-01120200402			25	35								
LAP 35/25 (10 PCS)	E12KA-01120200502	50	70	25	35	16,0	90	9,8	6,8	16	2-2	5-4	0,4
LAP 50/25 (10 PCS)	E12KA-01120200602			35	50								
LAP 50/35 (10 PCS)	E12KA-01120200702	70	95	25	35	18,5	110	11,2	6,8	18	3-2	6-4	0,6
LAP 70/25 (10 PCS)	E12KA-01120200802			35	50							8,0	0,65
LAP 70/35 (10 PCS)	E12KA-01120200902	70	95	50	70	22,0	120	13,2	9,8	22	3-2	6-5	0,6
LAP 70/50 (10 PCS)	E12KA-01120201002			35	50							8,0	0,9
LAP 95/35 (10 PCS)	E12KA-01120201102	95	120	50	70	23,0	120	14,7	11,2	22	3-3	6-6	0,8
LAP 95/50 (10 PCS)	E12KA-01120201202			70	95							11,2	0,8
LAP 95/70 (10 PCS)	E12KA-01120201302	120	150	35	50	25,0	130	16,3	8,0	25	3-3	6-6	0,9
LAP 120/35 (10 PCS)	E12KA-01120201402			50	70							9,8	1
LAP 120/50 (10 PCS)	E12KA-01120201502	120	150	70	95	28,5	130	18,3	13,2	28	3-3	6-6	1,2
LAP 120/70 (10 PCS)	E12KA-01120201602			95	120							14,7	0,9
LAP 120/95 (10 PCS)	E12KA-01120201702	150	185	35	50	28,5	130	18,3	8,0	25	3-3	6-5	1,4
LAP 150/35 (10 PCS)	E12KA-01120201802			50	70							9,8	1,3
LAP 150/50 (10 PCS)	E12KA-01120201902	150	185	70	95	28,5	130	18,3	9,8	25	3-3	6-5	1,3
LAP 150/70 (10 PCS)	E12KA-01120202002			95	120							13,2	0,13
LAP 150/95 (10 PCS)	E12KA-01120202102	150	185	120	150	28,5	130	18,3	14,7	28	3-3	6-6	1,2
LAP 150/120 (10 PCS)	E12KA-01120202202			120	150							14,7	1,2
LAP 185/50 (10 PCS)	E12KA-01120202302	185	240	50	70	28,5	130	18,3	9,8	28	3-3	6-5	1,8
LAP 185/70 (10 PCS)	E12KA-01120202402			70	95							11,2	1,7
LAP 185/95 (10 PCS)	E12KA-01120202502	185	240	95	120	28,5	130	18,3	13,2	28	3-3	6-6	1,5
LAP 185/120 (10 PCS)	E12KA-01120202602			120	150							14,7	1,5
LAP 185/150 (10 PCS)	E12KA-01120202702	150	185	150	185				16,3		6-3	1,55	

Type	Index Ergom	Cross-section, d ₁ rm/sm [mm ²]	Cross-section, d ₁ re/se [mm ²]	Cross-section, d ₂ rm/sm [mm ²]	Cross-section, d ₂ re/se [mm ²]	D	L	d ₁	d ₂	Socket code	Lz/s	Lz/w	Weight [kg]
LAP 240/95 (10 PCS)	E12KA-01120202802	240	300	95	120	32,0	150	21,0	13,2	32	3-3	8-6	2,2
LAP 240/120 (10 PCS)	E12KA-01120202902			120	150				14,7				2,15
LAP 240/150 (10 PCS)	E12KA-01120203002			150	185				16,3				2,1
LAP 240/185 (10 PCS)	E12KA-01120203102			185	240				18,3				1,95

Lz/s - Number of crimping - wide, Lz/w - Number of crimping - narrow

