

Non-tension compression reducing tubular cable connectors with barrier, LMP .../... type

FEATURES & BENEFITS

- tight connector Cu, crimped part as per DIN
- description of cable cross-section, crimping die number on crimped part surface
- wide range of solutions facilitating connection of cables of various diameters
- not mechanically loaded

LOGISTIC DATA

Quantity in package [pcs] 10

MECHANICAL DATA

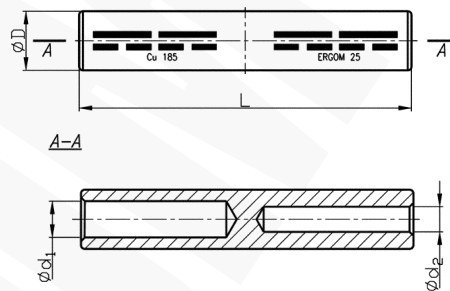
Material Cu
Surface uncoated

NOTE!

- sector-shaped conductors (sm) must be rounded with special dies;
- larger recommended number of crimps always refers to a larger ID of the connector.

Tin version on request.

Other versions on request.



Type	Index Ergom	Cross-section, d ₁ rm/sm [mm ²]	Cross-section, d ₂ rm/sm [mm ²]	D	d ₁	d ₂	L	Socket code no.	Lz/s	Lz/w	Weight [kg]
LMP 16/10 (10 PCS)	E11KM-02100200102	16	10	8,5	5,5	4,5	55	8	1 --	2-1	0,2
LMP 25/10 (10 PCS)	E11KM-02100200202	25	10	10,0	7,0	4,5	55	10	1 --	2-1	0,3
LMP 25/16 (10 PCS)	E11KM-02100200302		16			5,5					
LMP 35/16 (10 PCS)	E11KM-02100200402	35	16	12,5	8,2	5,5	55	12	1 -1	2-2	0,4
LMP 35/25 (10 PCS)	E11KM-02100200502		25			7,0					
LMP 50/25 (10 PCS)	E11KM-02100200602	50	25	14,5	10,0	7,0	65	14	1-1	3-2	0,7
LMP 50/35 (10 PCS)	E11KM-02100200702		35			8,2					
LMP 70/35 (10 PCS)	E11KM-02100200802	70	35	16,5	11,5	8,2	65	16	1-1	3-2	0,9
LMP 70/50 (10 PCS)	E11KM-02100200902		50			10,0				3-3	
LMP 95/50 (10 PCS)	E11KM-02100201102	95	50	19,0	13,5	10,0	75	18	2-1	4-3	1,2
LMP 95/70 (10 PCS)	E11KM-02100201202		70			11,5					1,25
LMP 120/50 (10 PCS)	E11KM-02100201402	120	50	21,0	15,5	10,0	75	20	2-1	4-3	1,3
LMP 120/70 (10 PCS)	E11KM-02100201502		70			11,5					1,5
LMP 120/95 (10 PCS)	E11KM-02100201602		95			13,5					1,35
LMP 150/70 (10 PCS)	E11KM-02100201802		70			11,5					2,2
LMP 150/95 (10 PCS)	E11KM-02100201902	150	95	23,5	17,0	13,5	85	22	2-2	4-4	1,8
LMP 150/120 (10 PCS)	E11KM-02100202002		120			15,5					1,95
LMP 185/95 (10 PCS)	E11KM-02100202302	185	95	25,5	19,0	13,5	95	25	2-2	4-4	2,8
LMP 185/120 (10 PCS)	E11KM-02100202402		120			15,5					2,7
LMP 185/150 (10 PCS)	E11KM-02100202502		150			17,0					2,7
LMP 240/120 (10 PCS)	E11KM-02100202802		120			15,5					4,2
LMP 240/150 (10 PCS)	E11KM-02100202902	240	150	29,0	21,5	17,0	95	28	2-2	-	3,4
LMP 240/185 (10 PCS)	E11KM-02100203002		185			19,0					

Lz/s - Number of crimping - wide, Lz/w - Number of crimping - narrow