

"Butt splice" connectors, ZM type

FEATURES & BENEFITS

- connector Cu, standard, without galvanic tin plating, to make "butt splice" cable connections
- central stamping guarantees correct length of conductor insertion
- not mechanically loaded

MECHANICAL DATA

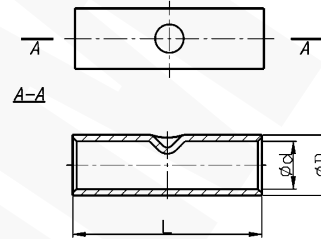
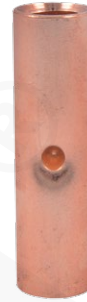
Material	Cu
Surface	uncoated

CERTIFICATES & STANDARDS

Design	standard
--------	----------

NOTE!

Sector-shaped conductors (sm) must be rounded with special dies.



Type	Index Ergom	Cross-section, mm ²	d	D	L	Socket code no.	Lz/s	Lz/w	Quantity in package [pcs]	Weight [kg]
ZM 0,75-12 (100 PCS)	E11KM-01060299000	0,5+0,75	1,3	2,8	12	-	-	1 - 1	100	0,07
ZM 1,5-15 (100 PCS)	E11KM-01060299100	1+1,5	1,8	3,3	15	-	-	1 - 1	100	0,08
ZM 1,5-20 (100 PCS)	E11KM-01060299200				20					
ZM 2,5-15 (100 PCS)	E11KM-01060299300	2,5	2,3	4,2	15	-	-	1 - 1	100	0,11
ZM 2,5-20 (100 PCS)	E11KM-01060299400				20					
ZM 4-15 (100 PCS)	E11KM-01060299500	4	3	5	15	-	-	1 - 1	100	0,17
ZM 4-20 (100 PCS)	E11KM-01060299600				20					
ZM 6-20 (100 PCS)	E11KM-01060299700	6	4	6	20	-	-	1 - 1	100	0,28
ZM 6-25 (100 PCS)	E11KM-01060299800				25					
ZM 10 (100 PCS)	E11KM-01060300100	10	4,5	7,0	30	7	1 - 1	2 - 2	100	0,6
ZM 10 (10 PCS)	E11KM-01060300102								10	
ZM 16 (100 PCS)	E11KM-01060300200	16	5,5	8,5	30	8	1 - 1	2 - 2	100	0,9
ZM 16 (10 PCS)	E11KM-01060300202								10	
ZM 25 (100 PCS)	E11KM-01060300300	25	7,0	10,0	38	10	1 - 1	2 - 2	100	1,3
ZM 25 (10 PCS)	E11KM-01060300302								10	
ZM 35 (100 PCS)	E11KM-01060300400	35	8,5	12,0	42	12	1 - 1	2 - 2	100	2,1
ZM 35 (10 PCS)	E11KM-01060300402								10	
ZM 50 (100 PCS)	E11KM-01060300500	50	10,0	14,0	48	14	1 - 1	2 - 2	100	3,2
ZM 50 (10 PCS)	E11KM-01060300502								10	
ZM 70 (100 PCS)	E11KM-01060300600	70	12,0	16,5	52	16	1 - 1	3 - 3	100	4,6
ZM 70 (10 PCS)	E11KM-01060300602								10	
ZM 95 (50 PCS)	E11KM-01060300700	95	13,5	18,0	58	17	1 - 1	3 - 3	50	2,8
ZM 95 (10 PCS)	E11KM-01060300702								10	
ZM 120 (50 PCS)	E11KM-01060300800	120	15,0	19,5	62	19	1 - 1	3 - 3	50	3,3
ZM 120 (10 PCS)	E11KM-01060300802								10	
ZM 150 (50 PCS)	E11KM-01060300900	150	16,5	21,0	68	20	2 - 2	4 - 4	50	4
ZM 150 (10 PCS)	E11KM-01060300902								10	
ZM 185 (50 PCS)	E11KM-01060301000	185	19,0	24,0	72	23	2 - 2	4 - 4	50	5,4
ZM 185 (10 PCS)	E11KM-01060301002								10	
ZM 240 (50 PCS)	E11KM-01060301100	240	21,0	26,0	88	25	2 - 2	5 - 5	50	7,1
ZM 240 (10 PCS)	E11KM-01060301102								10	

Type	Index Ergom	Cross-section, mm ²	d	D	L	Socket code no.	Lz/s	Lz/w	Quantity in package [pcs]	Weight [kg]
ZM 300 (25 PCS)	E11KM-01060301200	300	24,0	30,0	102	28	2 - 2	-	25	5,7
ZM 300 (10 PCS)	E11KM-01060301202								10	2,3
ZM 400	E11KM-01060301302	400	27,5	33,5	112	32	2 - 2	-	1	0,3
ZM 500	E11KM-01060301402	500	31,0	38,0	140	36	2 - 2	-	1	0,5
ZM 625	E11KM-01060301502	625	34,0	40,0	160	42	3 - 3	-	1	0,5

Lz/s - Number of crimping - wide, Lz/w - Number of crimping - narrow

