

Aluminium-copper washers, PMA type

FEATURES & BENEFITS

- electrically and mechanically effective connection of copper and aluminum components
- high durability and resistance to load current
- made of cold-rolled bimetallic Al-Cu sheet

LOGISTIC DATA

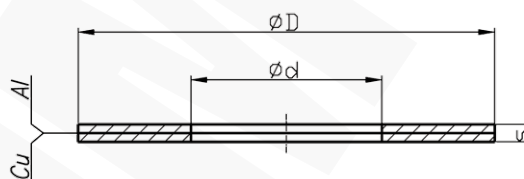
Quantity in package [pcs] 100

APPLICATION

Connecting aluminum and copper materials eg. aluminum cable terminal with copper busbar. The use of bimetallic plates between copper and aluminum elements prevents electrolytic corrosion of Al-Cu contact.

MECHANICAL DATA

Material Al-Cu
Surface uncoated
Thickness s [mm] 1



Type	Index Ergom	Ø d	Ø D	Screw	Weight [kg]
PMA 3 (100 PCS)	E13KC-01060100100	3,5	8,5	M3	0,03
PMA 4 (100 PCS)	E13KC-01060100200	4,5	8,5	M4	0,03
PMA 5 (100 PCS)	E13KC-01060100300	5,5	11,0	M5	0,05
PMA 6 (100 PCS)	E13KC-01060100400	6,5	13,0	M6	0,06
PMA 8 (100 PCS)	E13KC-01060100500	8,5	17,0	M8	0,1
PMA 10 (100 PCS)	E13KC-01060100600	11,0	22,0	M10	0,14
PMA 12 (100 PCS)	E13KC-01060100700	13,0	28,0	M12	0,27
PMA 16 (100 PCS)	E13KC-01060100800	17,0	35,0	M16	0,41
PMA 20 (100 PCS)	E13KC-01060100900	21,0	40,0	M20	0,51