

Insulated closed end connectors, ZPI type

FEATURES & BENEFITS



to install in flush-mounted cable boxes by crimping with crimping tool



facilitates reliable connection of two or more cables

LOGISTIC DATA

Quantity in package [pcs] 100

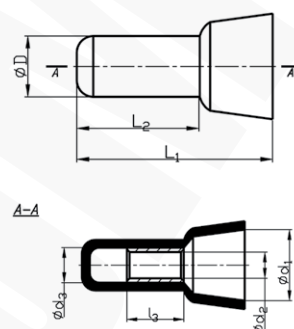
MECHANICAL DATA

Insulation polyamide 6.6

Material Cu

Surface tin-plated

Operating temperature [°C] -30 ÷ +95



ERC

| Type | Index Ergom | Cross-section [mm ²] | D | L1 | L2 | d ₁ | d ₂ | d ₃ | L3 | Weight [kg] |
|--------------------------|-------------------|----------------------------------|-----|------|------|----------------|----------------|----------------|-----|-------------|
| ZPI 1 (100 PCS) | E14KI-06010100101 | 0,5+1,0 | 5,0 | 18,0 | 12,0 | 6,3 | 2,4 | 3,4 | 6,7 | 0,04 |
| ZPI 2,5 (100 PCS) | E14KI-06010100201 | 1,5+2,5 | 5,5 | 20,0 | 13,0 | 8,0 | 3,1 | 4,0 | 7,0 | 0,05 |
| ZPI 6 (100 PCS) | E14KI-06010100301 | 4+6 | 7,3 | 24,6 | 14,7 | 10,5 | 4,2 | 5,7 | 8,1 | 0,14 |

