

Round punching dies, NWY...

FEATURES & BENEFITS



blanking dies for making holes in metal plates using hydraulic blanking machine or head

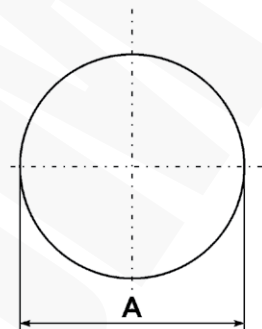


extensive assortment, other designs in line with client's needs

NOTE!

Punching dies NWY larger than 37,4 are sold in sets with MOLYKOTE 1000 thread paste.

Other sizes available on request.



Type	Index Ergom	Central hole diameter [mm]	PG thread	M thread	Draw screw	Ø
NWY 12,2 / M12	E06WD-01060110050	10+10,5	-	M12x1,5	3/8"UNF - 63	12,2
NWY 15,4/PG9	E06WD-01060110100	10+10,5	PG9	-	3/8"UNF - 63	15,4
NWY 16,2/M16	E06WD-01060110200	10+10,5	-	M16x1,5	3/8"UNF - 63	16,2
NWY 18,8/PG11	E06WD-01060110300	10+10,5	PG11	-	3/8"UNF - 63	18,8
NWY 20,7/PG13 /M20	E06WD-01060110400	10+10,5	PG13	M20x1,5	3/8"UNF - 63	20,7
NWY 22,8/PG16	E06WD-01060110500	10+10,5	PG16	-	3/8"UNF - 63	22,8
NWY 25,5/M25	E06WD-01060110600	10+10,5	-	M25x1,5	3/8"UNF - 63	25,5
NWY 28,6/PG21	E06WD-01060110700	10+10,5	PG21	-	3/8"UNF - 63	28,6
NWY 30,5/M30	E06WD-01060110730	10+10,5	-	M30x1,5	3/8"UNF - 63	30,5
NWY 32,5 / M32	E06WD-01060110750	10+10,5	-	M32x1,5	3/8"UNF - 63	32,5
NWY 37,4/PG29	E06WD-01060110800	19,5+20	PG29	-	3/4"UNF - 85	37,4
NWY 40,5 / M40	E06WD-01060110850	19,5+20	-	M40x1,5	3/4"UNF - 85	40,5
NWY 47,5/PG36	E06WD-01060110900	19,5+20	PG36	-	3/4"UNF - 85	47,5
NWY 50,5 / M50	E06WD-01060110950	19,5+20	-	M50x10,5	3/4"UNF - 85	50,5
NWY 54,5/PG42	E06WD-01060111000	19,5+20	PG42	-	3/4"UNF - 85	54,5
NWY 59,8/PG48	E06WD-01060111100	19,5+20	PG48	-	3/4"UNF - 85	59,8
NWY 63,5 / M63	E06WD-01060111200	19,5+20	-	M63x1,5	3/4"UNF - 85	63,5