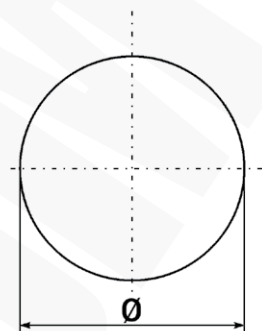


Three fold split manual punching dies N3W

FEATURES & BENEFITS

- blanking dies with manual drive, e.g. open-ended spanner, equipped with draw bolt
- Split slugs gets cut on three parts what makes possible fall free and can be disposed of easily
- thrust bearing used facilitates hole cutting operations
- draw mandrel included



NOTE!

Punching dies N3W larger than 40,5 are sold in sets with MOLYKOTE 1000 thread paste.

Autres dimensions disponibles sur demande.

| Type | Index Ergom | Ø | Max. thickness of material (steel) [mm] | Spanner size | Central hole diameter [mm] | PG thread | M thread | Draw screw | Otwór calowy |
|-------------------|-------------------|------|-----------------------------------------|--------------|----------------------------|-----------|----------|--------------|--------------|
| N3W 12,2/PG7/M12 | E06WD-01020120050 | 12,2 | 1,5 | 17 | 10+10,5 | PG7 | M12 | 3/8"UNF - 63 | 1/2" |
| N3W 15,4/PG9 | E06WD-01020120100 | 15,4 | 2,0 | 17 | 10+10,5 | PG9 | | 3/8"UNF - 63 | |
| N3W 16,2/M16 | E06WD-01020120200 | 16,2 | 2,0 | 17 | 10+10,5 | | M16 | 3/8"UNF - 63 | |
| N3W 18,8/PG11 | E06WD-01020120300 | 18,8 | 2,0 | 17 | 10+10,5 | PG11 | | 3/8"UNF - 63 | 3/4" |
| N3W 20,7/PG13/M20 | E06WD-01020120400 | 20,7 | 2,0 | 17 | 10+10,5 | PG13 | M20 | 3/8"UNF - 63 | |
| N3W 22,8/PG16 | E06WD-01020120500 | 22,8 | 2,0 | 17 | 10+10,5 | PG16 | | 3/8"UNF - 63 | 7/8" |
| N3W 25,5/M25 | E06WD-01020120600 | 25,5 | 2,0 | 17 | 10+10,5 | | M25 | 3/8"UNF - 63 | 1" |
| N3W 28,6/PG21 | E06WD-01020120700 | 28,6 | 2,0 | 17 | 10+10,5 | PG21 | | 3/8"UNF - 63 | |
| N3W 30,5/M30 | E06WD-01020120800 | 30,5 | 2,0 | 17 | 10+10,5 | | M30 | 3/8"UNF - 63 | 1-7/32" |
| N3W 32,5/M32 | E06WD-01020120900 | 32,5 | 2,0 | 17 | 10+10,5 | | M32 | 3/8"UNF - 63 | |
| N3W 37,4/PG29 | E06WD-01020121000 | 37,4 | 3,0 | 27 | 19,5+20 | PG29 | | 3/4"UNF - 85 | 1-1/2" |
| N3W 40,5/M40 | E06WD-01020121100 | 40,5 | 3,0 | 27 | 19,5+20 | | M40 | 3/4"UNF - 85 | |
| N3W 47,5/PG36 | E06WD-01020121200 | 47,5 | 3,0 | 27 | 19,5+20 | PG36 | | 3/4"UNF - 85 | |
| N3W 50,5/M50 | E06WD-01020121300 | 50,5 | 3,0 | 27 | 19,5+20 | | M50 | 3/4"UNF - 85 | |
| N3W 54,5/PG42 | E06WD-01020121400 | 54,5 | 3,0 | 27 | 19,5+20 | PG42 | | 3/4"UNF - 85 | 2-1/8" |
| N3W 59,8/PG48 | E06WD-01020121500 | 59,8 | 3,0 | 27 | 19,5+20 | PG48 | | 3/4"UNF - 85 | |
| N3W 63,5/M63 | E06WD-01020121600 | 63,5 | 3,0 | 27 | 19,5+20 | | M63 | 3/4"UNF - 85 | 2-1/2" |