


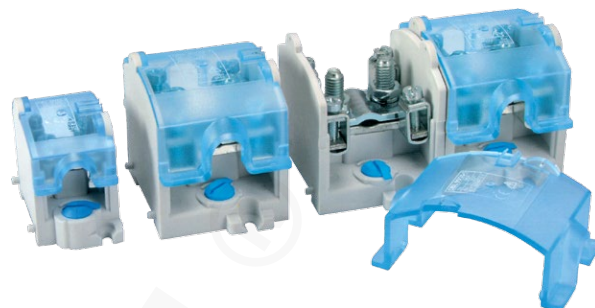


1-line Installation branches, OBL...-1 type

FEATURES & BENEFITS

-  single blocks can be easily connected
-  4 branched terminals in each line
-  can be connected directly to main terminal, without cable conductor cutting



LOGISTIC DATA

Quantity in package [pcs]	10
---------------------------	----

Numbers on a branch describe successively:
possibility of connecting to the main line (1), possibility of connecting branch lines (2) and no. of main lines e.g.:
OBL 25/10-4: main line - wire max. 25 mm², branch lines - wire max. 10 mm², no. of main lines 4; U, V, W, N.
OBL 95/35-1: main line - wire max. 95 mm², branch lines - wire max. 35 mm², no. of main lines 1; possibility of attaching a marker.

APPLICATION

New line of 1-circuit and 4-circuit branches (1) with the OBL symbol is designed for making electrical connections. Each of electrical branch lines (2) is equipped with four steel clamps, whereas the neutral line in 4-circuit type is equipped with 6 such clamps. All electrical elements are tin plated or galvanized in order to protect them against corrosion. Each branch has holes for sealing with lead, which makes the cover unable to remove. Holes are adjusted to typical and functional safety locks present on the market. New branches can be installed on a TSE 35 busbar and on the floor/ground. To mount a branch on a TSE 35 busbar, we use cam fasteners which can be rotated between three rotation limiters indicating the position: "for installation" and "after installation". This functional solution facilitates installation and makes it possible to evaluate how a given branch is installed on the busbar.

MECHANICAL DATA

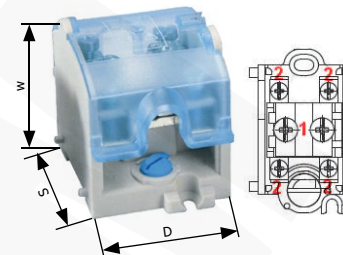
Body colour	grey
Cover colour	blue
Body material	polyamide
Cover material	transparent polycarbonate
Clamp material	steel - Zn5 covering
Current circuit material	brass - SN6 covering
Ambient temperature [°C]	-25 ÷ +100

ELECTRICAL DATA

Insulation voltage [V]	750
------------------------	-----

CERTIFICATES & STANDARDS

Standards	EN 60998-2-1 EN 60947-7-1 Safety sign "B"
-----------	---



Type	Index Ergom	S	W	D	Nominal cross-section of main circuit [mm ²]	Wire cross-section (wire / main line circuit cord) [mm ²]	Main circuit continuous current [A]	Main circuit insulation length [mm]	Nominal cross-section of branch circuit [mm ²]	Wire cross-section (wire / branch circuit cord) [mm ²]	Secondary circuit continuous current [A]	Branch circuit insulation length [mm]	Max. tightening torque [Nm] (1) / (2)	Weight [g]
OBL 25/10-1 (10 PCS)	R35RW-01040000103	59	48	33	25	25/16	101	20	10	10/6	57	15	2,0/1,2	680
OBL 25/16-1 (10 PCS)	R35RW-01040000203	64	58	38	25	25/16	101	21	16	16/10	76	17	2,0/2,0	960
OBL 35/25-1 (10 PCS)	R35RW-01040000303	64	58	58	35	35/25	125	27	25	25/6	101	17	2,0/2,0	1140
OBL 70/25-1 (10 PCS)	R35RW-01040000403	77	62	53	70	70/50	192	27	25	25/16	101	18	6,0/2,0	1900
OBL 95/35-1 (10 PCS)	R35RW-01040000503	77	62	53	95	95/70	232	27	35	35/35	125	18	6,0/2,0	2130